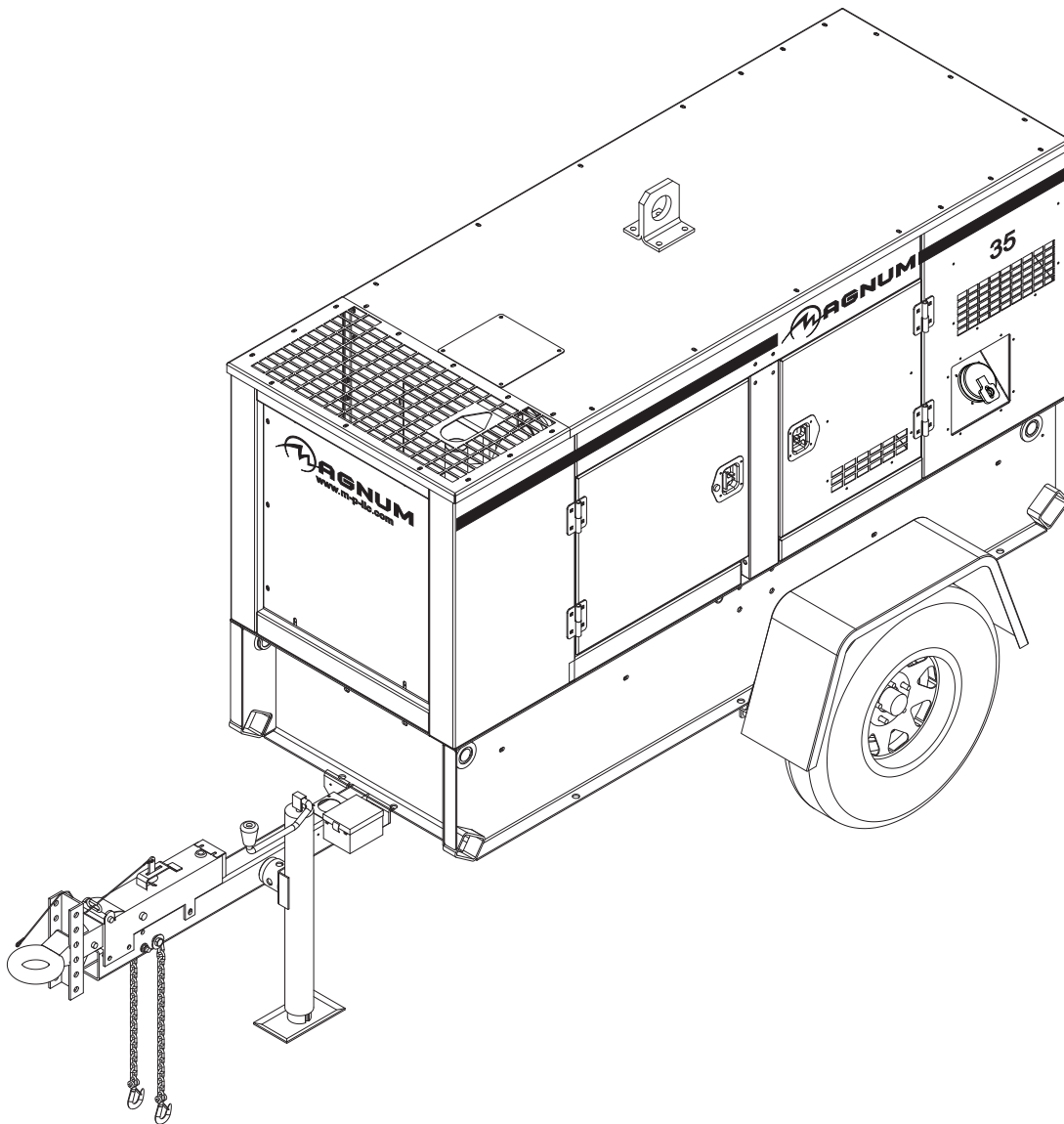




DIESEL GENERATOR MMG35D



PARTS MANUAL

INTRODUCTION

Before servicing this machine, make sure the engine start switch is turned to off "O", the circuit breakers are open (off, "O"), the emergency stop switch is closed (pushed in), and the negative (-) terminal on battery is disconnected. Attach a "DO NOT START" sign to the control panel. This will notify everyone that the unit is being serviced and will reduce the chance of someone inadvertently trying to start the unit. If the unit is connected to a remote start or transfer switch, make sure the remote switch is also off and tagged.

▲ WARNING

Before operating or servicing this equipment, read and understand the Magnum Operating Manual which was included with the unit when shipped from the factory. Failure to do so increases the risk of injury to yourself or others.

MAGNUM POWER PRODUCTS LLC

215 Power Drive • Berlin, WI 54923

U.S.A.

Phone: 920-361-4442

FAX: 920-361-4416

Toll Free: 1-800-926-9768

www.m-p-llc.com

For technical or parts QUESTIONS, please contact Magnum Power Products' Customer Support or Technical Support team at 920-361-4442 or toll free at 1-800-926-9768. Please have your serial number available.

To ORDER SERVICE PARTS, please contact the dealer from which you purchased the unit, or call Magnum Power Products to locate a dealer in your area.

Engine Make: _____

Engine Serial Number: _____

Engine Model Number: _____

Generator Make: _____

Generator Model Number: _____

Generator Serial Number: _____

Unit Model Number: _____

Unit Serial Number: _____

▲ WARNING

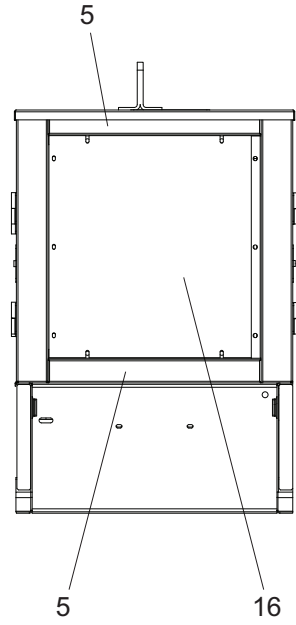
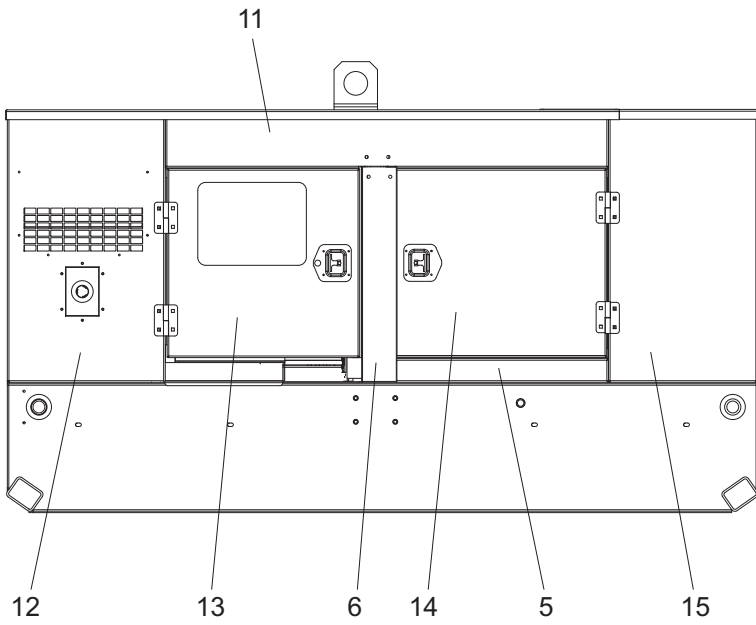
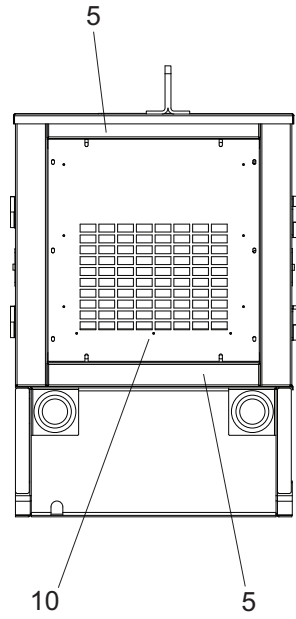
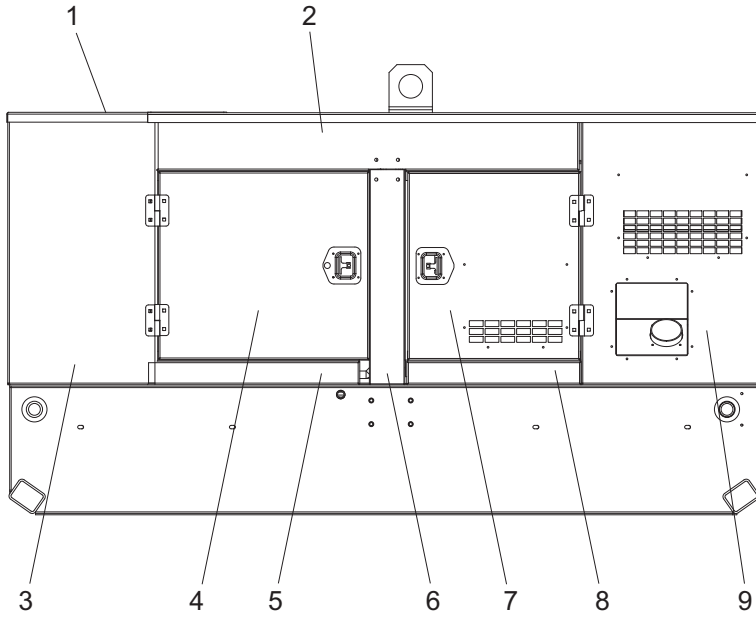
CALIFORNIA PROPOSITION 65 WARNING:

Diesel engine exhaust and some of its constituents are known to the state of California to cause cancer, birth defects and other reproductive harm.

TABLE OF CONTENTS

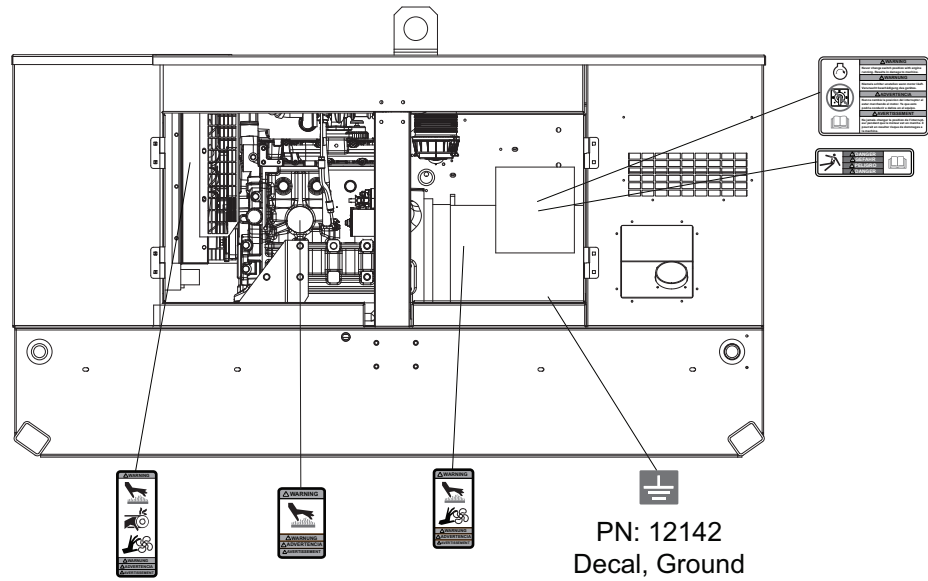
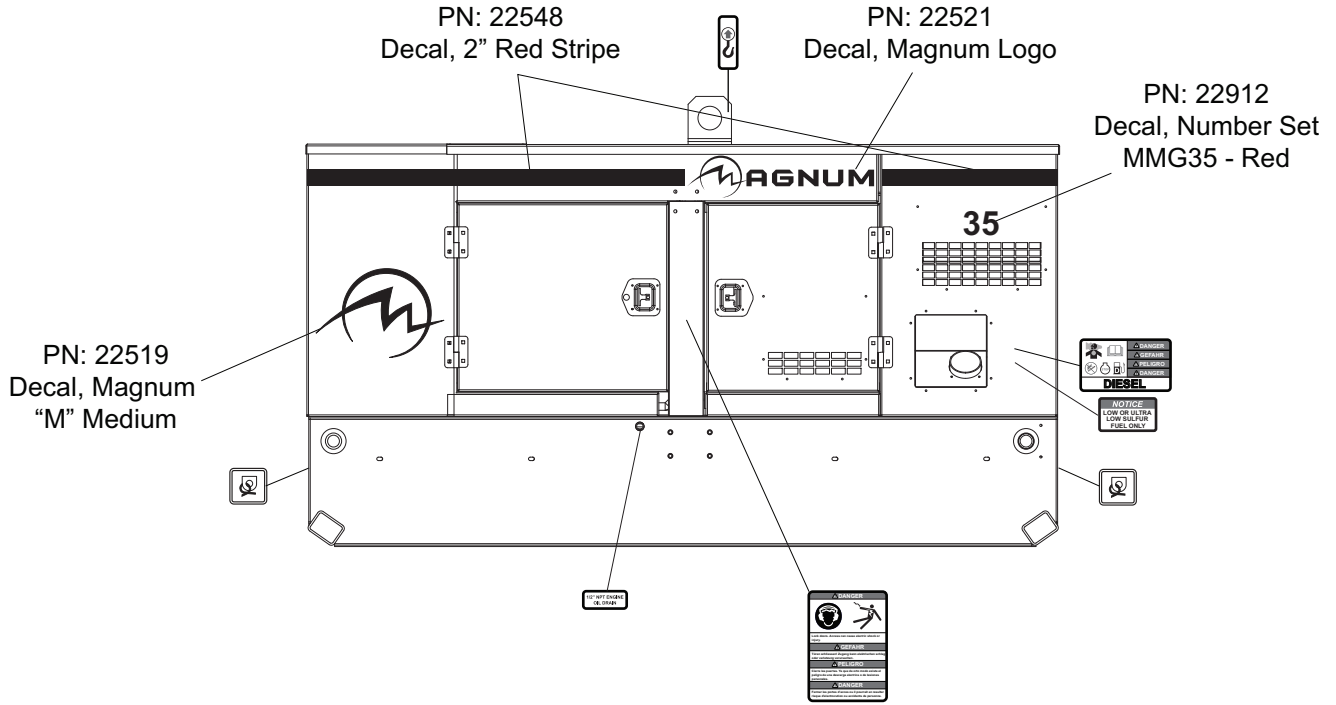
	Page
INTRODUCTION	2
ENCLOSURE PANELS	4
UNIT DECALS	6
UNIT DECALS (CONTINUED)	7
UNIT DECALS (CONTINUED)	8
LUG BOX DOOR	9
LUG PLATE ASSEMBLY	10
CAM LOCK PANEL ASSEMBLY	11
OUTLET PANEL ASSEMBLY	12
CONTROL PANEL ASSEMBLY	13
CONTROL BOX ASSEMBLY	14
CONTROL BOX ASSEMBLY (CONTINUED)	16
AIR FILTER ASSEMBLY	17
EXHAUST SYSTEM ASSEMBLY	18
FUEL TANK ASSEMBLY	19
ENGINE ASSEMBLY	20
GENERATOR ASSEMBLY	22
SKID ASSEMBLY	24
COOLING SYSTEM ASSEMBLY	26
ENGINE TO SKID ASSEMBLY	28
SMALL SIDE & END PANEL ASSEMBLIES	30
FRONT CORNER ASSEMBLY	31
LEFT REAR CORNER ASSEMBLY	32
RIGHT REAR CORNER ASSEMBLY	34
LEFT FRONT DOOR ASSEMBLY	36
RIGHT FRONT DOOR ASSEMBLY	37
LEFT REAR DOOR ASSEMBLY	38
CONTROL DOOR ASSEMBLY	39
END PANEL ASSEMBLIES	40
SIDE PANEL ASSEMBLIES	41
ROOF ASSEMBLY	42
TRAILER ASSEMBLY - SINGLE AXLE	44
TRAILER ASSEMBLY - TANDEM AXLE	46
BRAKE LINES - SINGLE AXLE	48
BRAKE LINES - TANDEM AXLE	49

ENCLOSURE PANELS



ITEM	PAGE	QTY	DESCRIPTION
1	Page 42	1	Roof panel assembly
2	Page 41	1	Left top side panel assembly
3	Page 31	1	Left front corner assembly
4	Page 36	1	Left front door assembly
5	Page 30	5	End/side panel assembly
6	Page 41	2	Center side panel assembly
7	Page 38	1	Left rear door assembly
8	Page 30	1	Side panel assembly (short)
9	Page 32	1	Left rear corner assembly
10	Page 40	1	Rear panel assembly
11	Page 41	1	Right top side panel assembly
12	Page 34	1	Right rear corner assembly
13	Page 39	1	Control door assembly
14	Page 37	1	Right front door assembly
15	Page 31	1	Right front corner assembly
16	Page 40	1	Front panel assembly

UNIT DECALS



Located on tongue of trailered units:

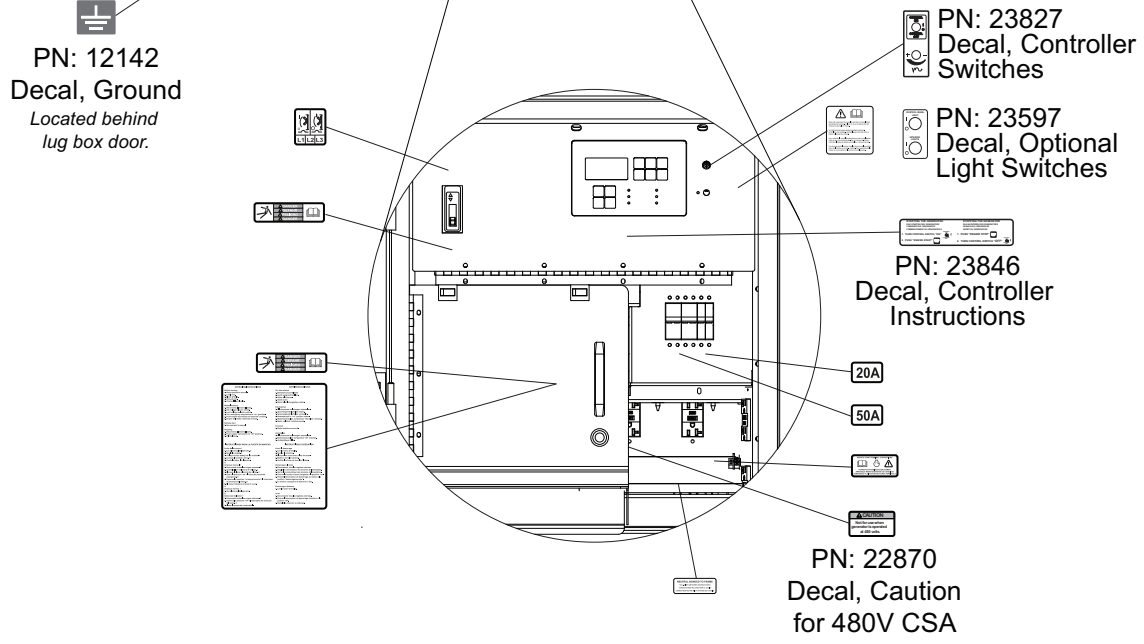
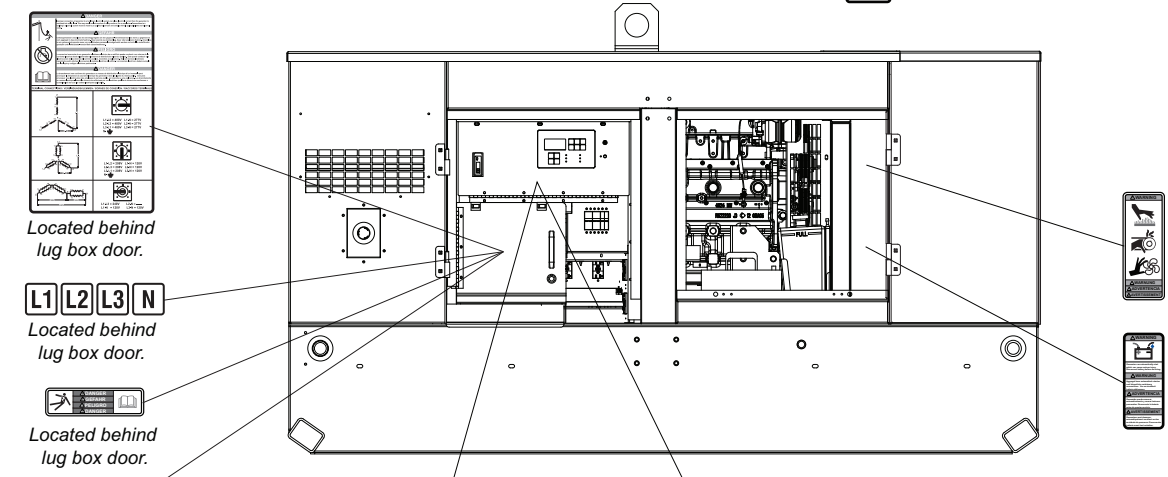
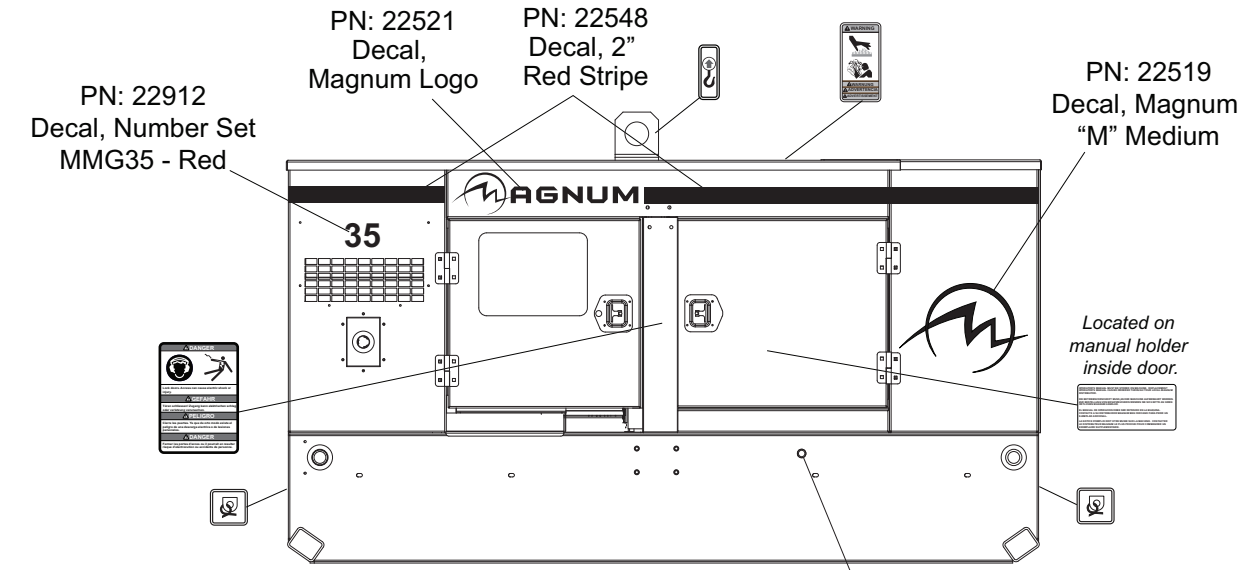
<p>TOURNE INSTRUCTIONS</p> <p>1. Lire attentivement les instructions avant d'utiliser l'engin.</p> <p>2. Ne pas laisser l'engin sans surveillance.</p> <p>3. Ne pas laisser l'engin fonctionner sans opérateur.</p> <p>4. Ne pas laisser l'engin fonctionner sans surveillance.</p> <p>5. Ne pas laisser l'engin fonctionner sans surveillance.</p>	<p>ABSCHLEPPINSTRUKTIONEN</p> <p>1. Lesen Sie die Anweisungen vor dem Gebrauch des Geräts.</p> <p>2. Lassen Sie das Gerät nicht unbeaufsichtigt.</p> <p>3. Lassen Sie das Gerät nicht ohne Bediener laufen.</p> <p>4. Lassen Sie das Gerät nicht ohne Aufsicht laufen.</p> <p>5. Lassen Sie das Gerät nicht ohne Aufsicht laufen.</p>	<p>INSTRUCCIONES DE REMOLQUE</p> <p>1. Leer detenidamente las instrucciones antes de utilizar el equipo.</p> <p>2. No dejar el equipo sin supervisión.</p> <p>3. No dejar el equipo funcionar sin operador.</p> <p>4. No dejar el equipo funcionar sin supervisión.</p> <p>5. No dejar el equipo funcionar sin supervisión.</p>	<p>ISTRUZIONI DI RIMOVIAMENTO</p> <p>1. Leggere attentamente le istruzioni prima di utilizzare l'attrezzo.</p> <p>2. Non lasciare l'attrezzo senza sorveglianza.</p> <p>3. Non lasciare l'attrezzo funzionare senza operatore.</p> <p>4. Non lasciare l'attrezzo funzionare senza sorveglianza.</p> <p>5. Non lasciare l'attrezzo funzionare senza sorveglianza.</p>
--	--	--	---

PN: 29000
Decal, Tire Load ST205/75R-15 3500

PN: 29011
Decal, Tire Load ST205/75R-15 (TANDEM)

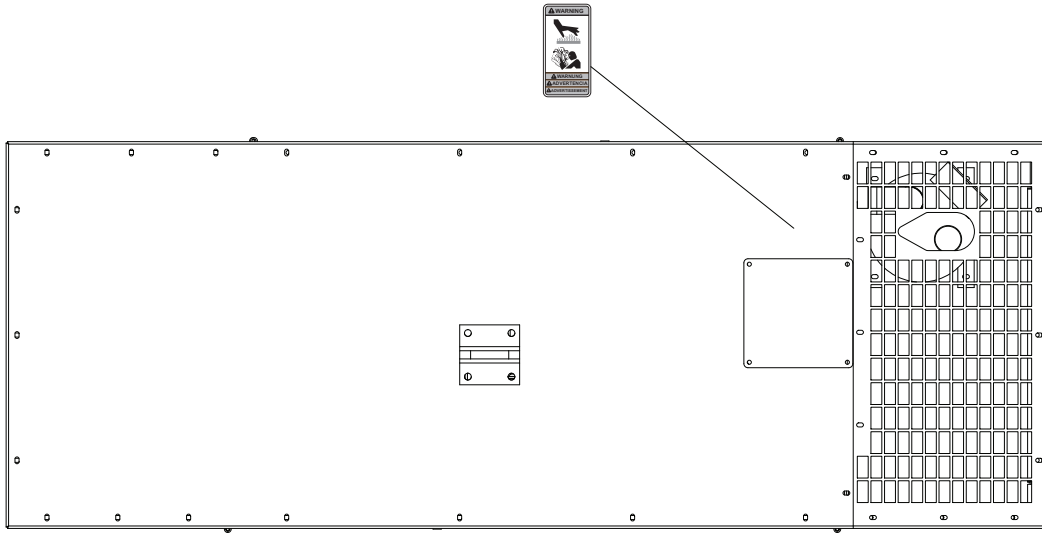
Note: All safety and operating decals are located on decal sheet 23599, unless otherwise noted.

UNIT DECALS (CONTINUED)

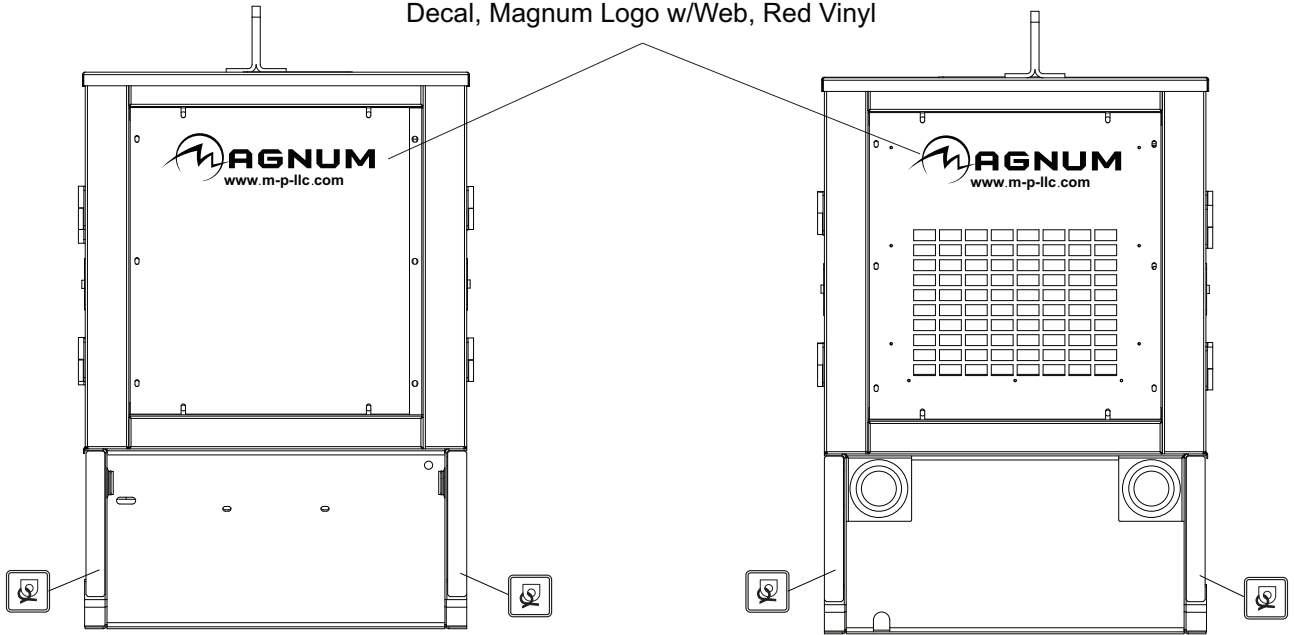


Note: All safety and operating decals are located on decal sheet 23599, unless otherwise noted.

UNIT DECALS (CONTINUED)

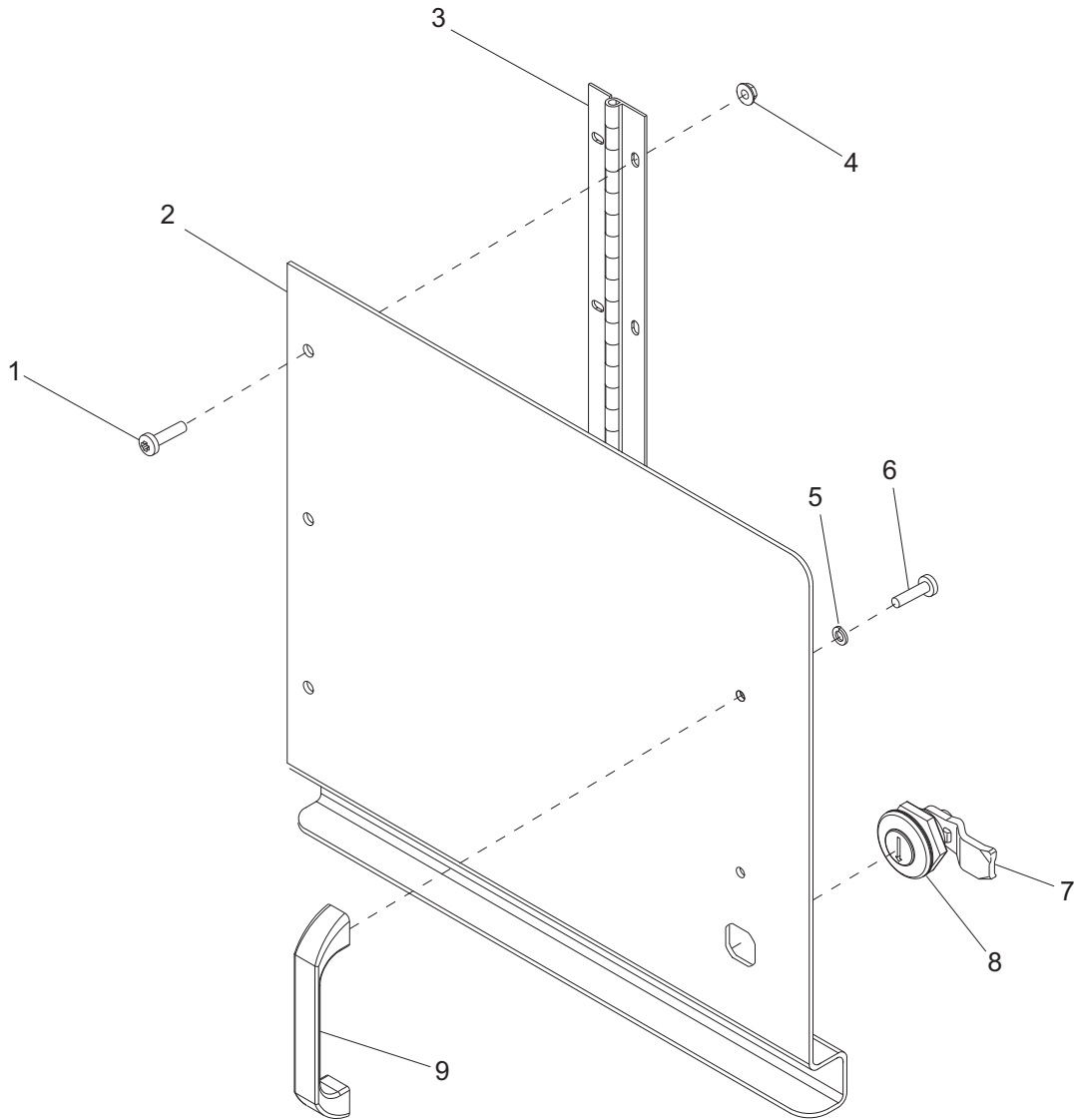


PN: 11275
Decal, Magnum Logo w/Web, Red Vinyl



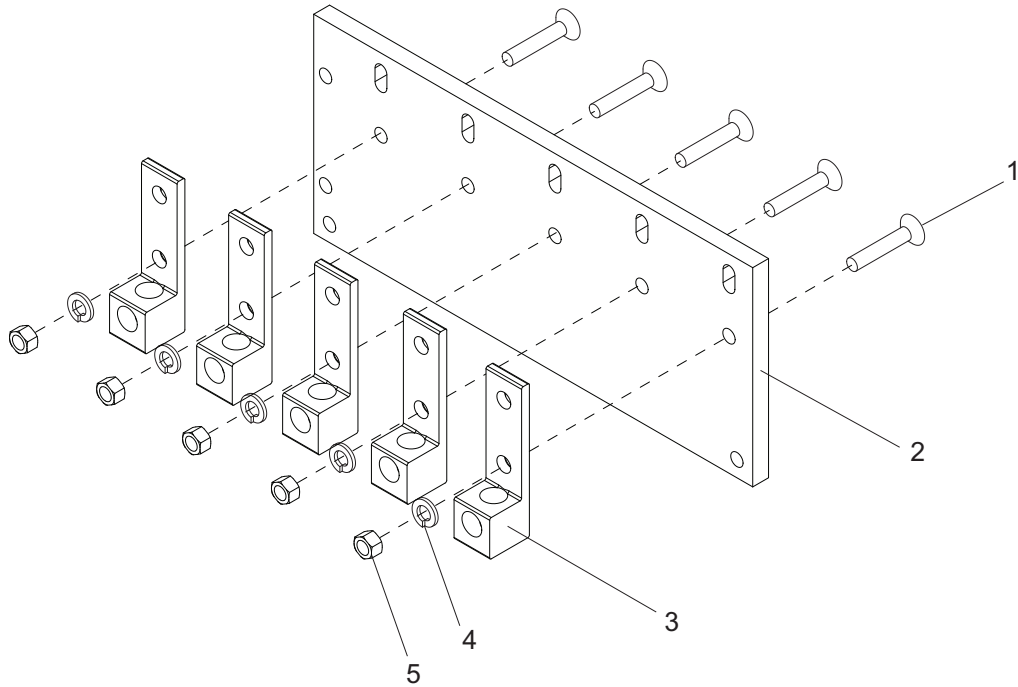
Note: All safety and operating decals are located on decal sheet 23599, unless otherwise noted.

LUG BOX DOOR



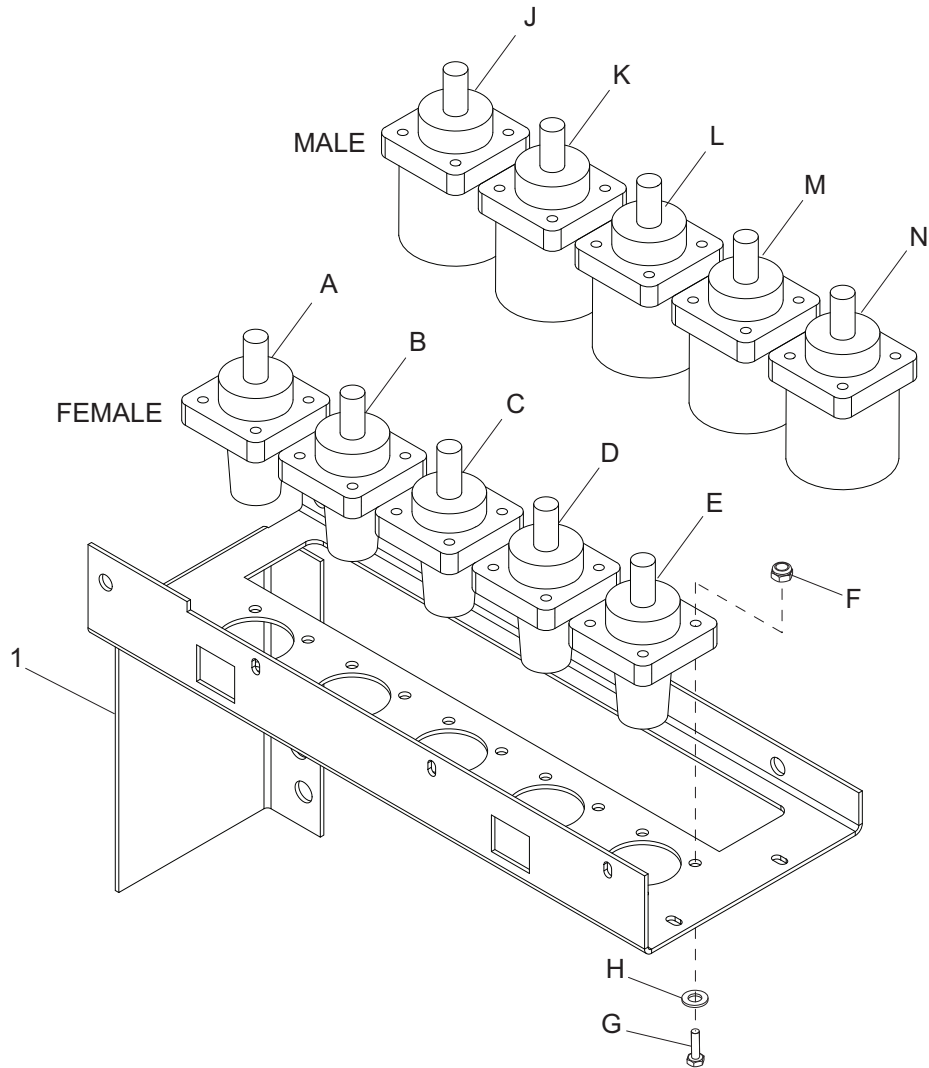
ITEM	PART NO.	QTY	DESCRIPTION	NOTES
1	60398	3	Screw, 10-32x.500 pan phil, SS	
2	28570W	1	Door, lug box	
3	22018	1	Hinge, continuous - 10.25 in	
4	61045	3	Nut, 10-32 sflg	
5	60252	2	Washer, split lock #10	
6	60068	2	Screw, 10-24x.500 pan phil	
7	12550	1	Cam lock lever leg	
8	12547	1	Assembly, cam lock, qrt turn	
9	18893	1	Handle, lug door	

LUG PLATE ASSEMBLY



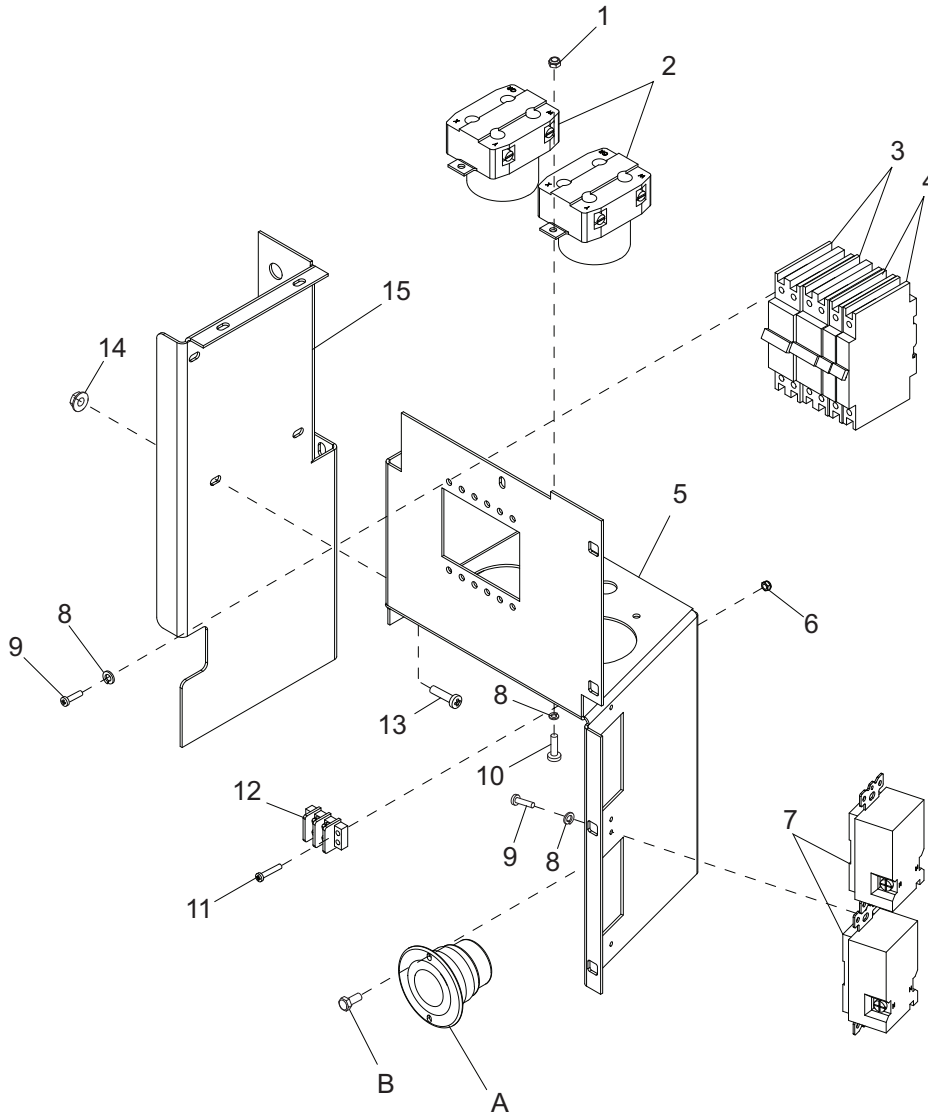
ITEM	PART	QTY	DESCRIPTION	NOTES
1	61005	5	Screw, .375-16x1.750 flat hex, G5	
2	27828	1	Panel, lug box glastic	
3	65677	5	Lug, terminal single, #6-350MCM - 2 hole	
4	60206	5	Washer, .375 split lock	
5	60140	5	Nut, .375-16 hex	

CAM LOCK PANEL ASSEMBLY



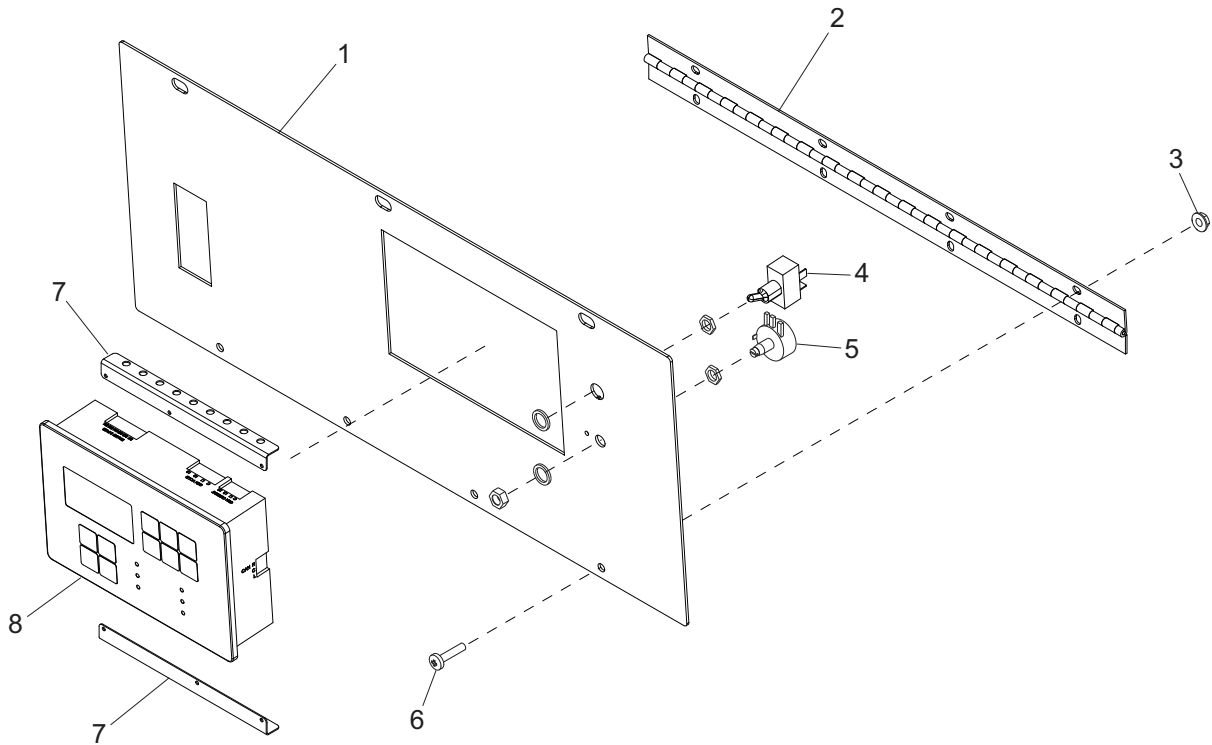
ITEM	PART	QTY	DESCRIPTION	NOTES
1	27825B	1	Panel, lug box top	
A	65551	1	Conn. cam lock fml, 400A - black	Option: cam locks
B	65552	1	Conn. cam lock fml, 400A - red	Option: cam locks
C	65553	1	Conn. cam lock fml, 400A - blue	Option: cam locks
D	66040	1	Conn. cam lock fml, 400A - white	Option: cam locks
E	66041	1	Conn. cam lock fml, 400A - green	Option: cam locks
F	60061	20	Nut, 10-32 nylock	Option: cam locks
G	60397	20	Screw, 10-32x1.0 pan phil	Option: cam locks
H	60237	20	Washer, #10 flat	Option: cam locks
J	66037	1	Conn. cam lock ml, 400A - black	Option: cam locks
K	66038	1	Conn. cam lock ml, 400A - red	Option: cam locks
L	66039	1	Conn. cam lock ml, 400A - blue	Option: cam locks
M	65554	1	Conn. cam lock ml, 400A - white	Option: cam locks
N	65555	1	Conn. cam lock ml, 400A - green	Option: cam locks

OUTLET PANEL ASSEMBLY



ITEM	PART	QTY	DESCRIPTION	NOTES
1	60061	4	Nut, 10-32 nylock	
2	18089	2	Receptacle, 240V/50A twist-lock	
3	18092	2	Breaker, 50A/240V, 2 pole	
4	18091	2	Breaker, 20A/120V, 1 pole	
5	27867B	1	Panel, outlet	
6	60290	2	Nut, 6-32 nylock, SS	
7	14130	2	Receptacle, 120V/20A GFI	
8	60058	16	Washer, #6 split lock	
9	60405	16	Screw, 6-32x.250 pan phil	
10	60648	4	Screw, 10-32x.500 pan phil, thrd form	
11	60046	2	Screw, 6-32x.750 pan phil	
12	18890	1	Terminal block, 2 pos	
13	60398	2	Screw, 10-32x.500 pan phil, SS	
14	61045	2	Nut 10-32 sflg	
15	27864B	1	Panel, lug box side	
A	65285	2	Receptacle, 120V/15A inlet	Option: Edison plug
B	60364	2	Screw, 10-16x.500 std hex, self drill	Option: Edison plug

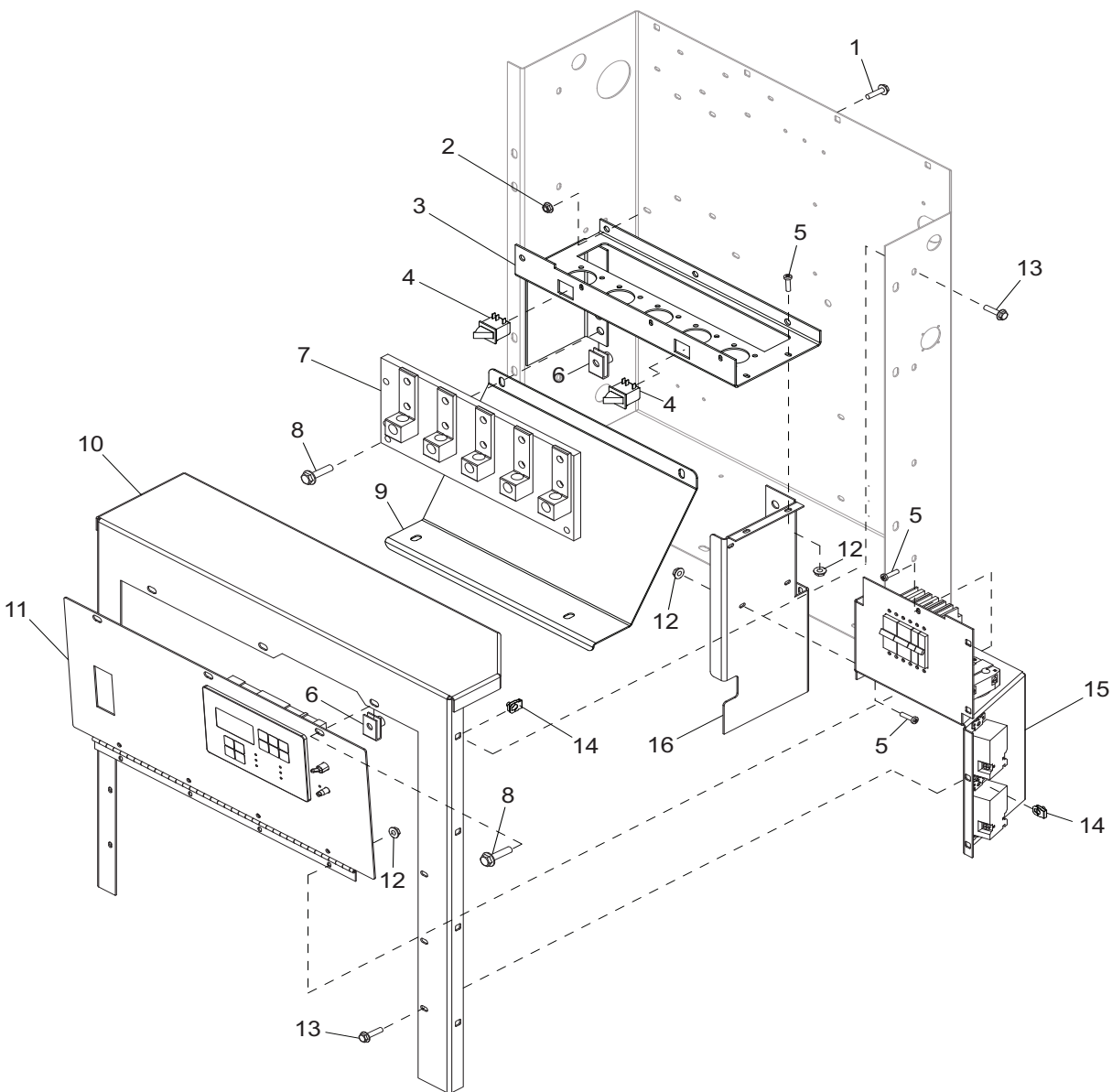
CONTROL PANEL ASSEMBLY



ITEM	PART	QTY	DESCRIPTION	NOTES
1	27827W	1	Panel, control	
2	18598	1	Hinge, controller panel - 18.75 in	
3	61045	4	Nut, 10-32 sflg	
4	25077	1	Switch, toggle - S.P.S.T. 20A VAC	
5	26229	1	Kit, voltage adjustment potentiometer	
6	60398	4	Screw, 10-32x.500 pan phil, SS	
7	29893	2	Bracket, control board wire guide	
8	66199	1	Controller, eng/gen	
--	18934	1	Guard, potentiometer	Not shown

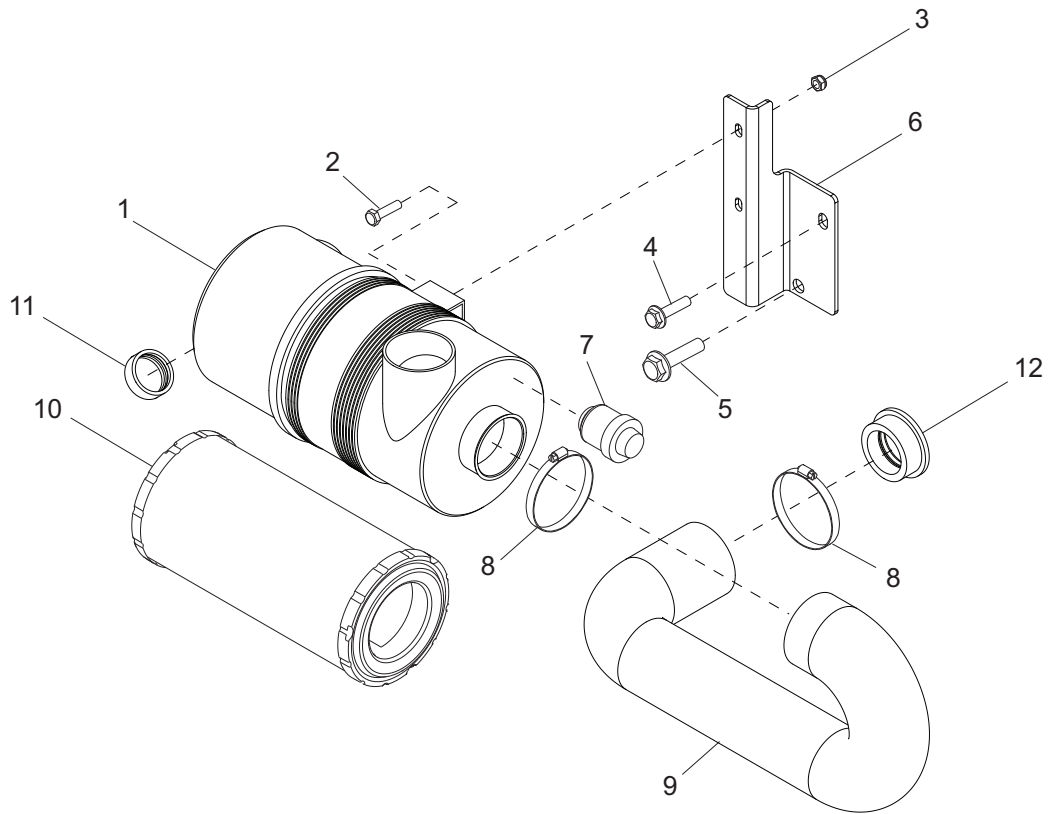
ITEM	PART	QTY	DESCRIPTION	NOTES
1	65788	1	Strain relief- 2.00 Romex w/nut	
2	27819B	1	Box, control	
3	65722	3	Transformer, current - terminals (100:5A)	
4	60398	6	Screw, 10-32x.500 pan phil, SS	
5	66455	2	Relay, 12V 70A N.C./80A N.O. w/diode	
6	14139	1	Block, terminal - 12 pos	
7	60062	4	Screw, 10-32x.750 pan phil	
8	60024	2	Screw, M6-1.00x25 sflg hex	
9	14204	1	Kit, ground bar	
10	61045	16	Nut, 10-32 sflg	
11	60115	5	Screw, M6-1.00x12 sflg hex	
12	65309	1	Connector, 21 pin Deutsch	
13	18556	1	Regulator, voltage - SE350	
14	22735	1	Board, governor controller	
15	66361	1	Connector, Deutsch - 9 pos plug	
16	60757	4	Screw, 4-40x.750 pan phil	
17	60084	4	Washer, M4 flat	
18	60758	4	Nut, 4-40 nylock	
19	65356	1	Block, terminal - 3 pole	
20	60036	9	Nut, M6-1.00 sflg lock	
21	60051	4	Nut, M4-.70 nylock	
22	14219	1	Strain relief - .75 Romex w/nut	
23	27890B	1	Bracket, breaker	
24	65446	1	Breaker, 125A	
25	60159	4	Screw, M4-0.70x45 pan phil	
A	22729	1	Regulator, voltage - PM300	Option: only for use with PMG generator
B	60524	2	Screw, 10-24x.625 pan phil	Option: battery charger
C	65326	1	Charger, battery - 2A, 3-stage	Option: battery charger
D	60457	2	Nut, 10-24 nylock	Option: battery charger
E	66340	1	Relay, voltage sensing (132 in 126 out)	Option: buck transformer
F	65674	2	Stop, 35MM din rail end	Option: buck transformer
G	65644	1	Base, relay - 8 pos	Option: buck transformer
H	65673	1	Rail, din - 35MMx 9.00"	Option: buck transformer
J	65461	1	Relay, 30A DPDT 120VAC power	Option: buck transformer
K	21487	1	Transformer, 1.13:1 1-phase 500VA	Option: buck transformer

CONTROL BOX ASSEMBLY (CONTINUED)



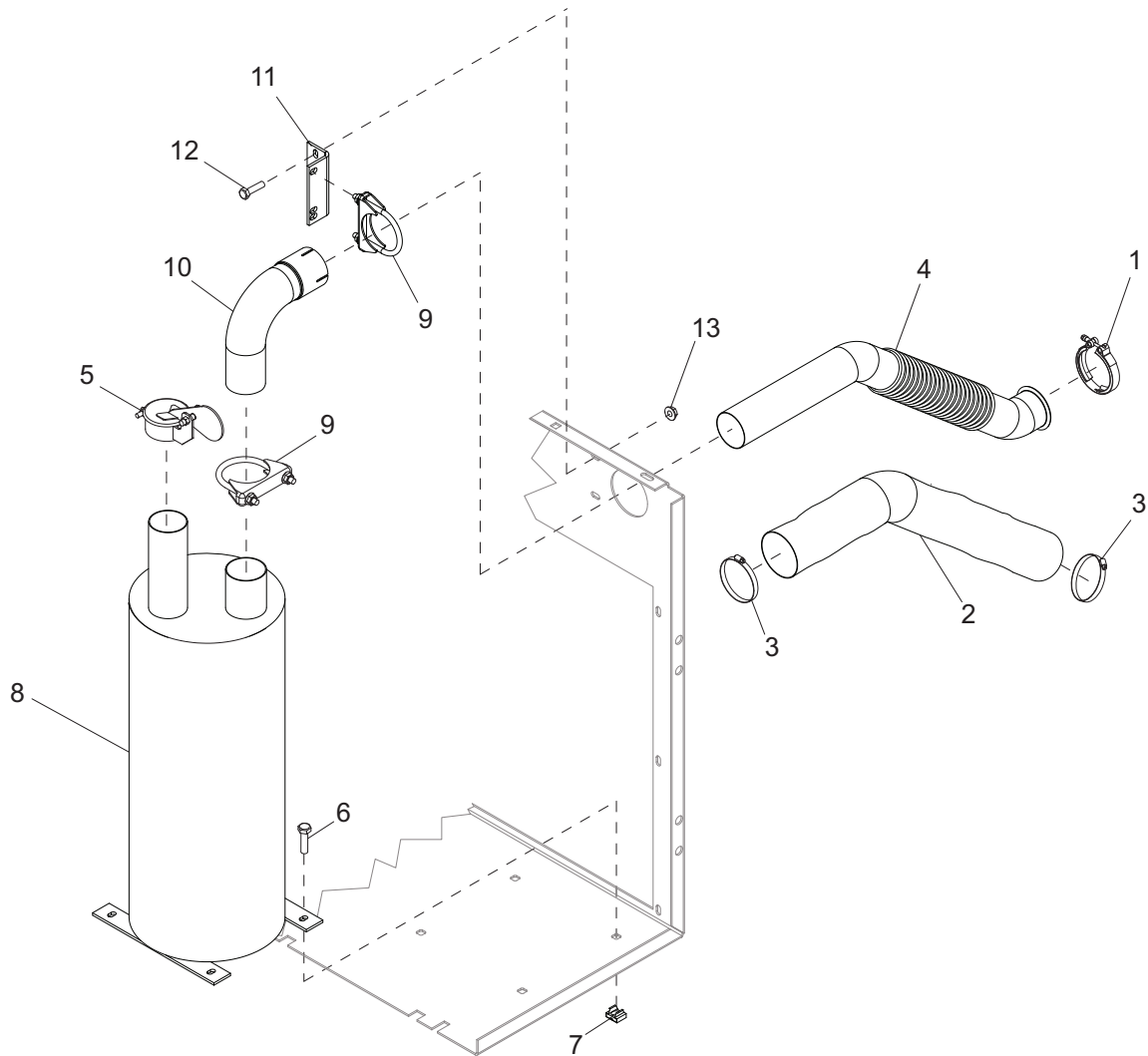
ITEM	PART	QTY	DESCRIPTION	NOTES
1	60115	3	Screw, M6-1.00x12 sflg hex	
2	60036	3	Nut, M6-1.00 sflg lock	
3	27825B	1	Panel, lug box top	
4	12632	2	Switch, trigger safety, NO & NC	
5	60398	8	Screw, 10-32x.500 pan phil, SS	
6	60505	6	Nut, .312-18 U-clip	
7	Page 10	1	Assembly, lug plate	
8	61091	6	Screw, .312-18x1.00 sflg hex	
9	27866B	1	Panel, lug box outlet	
10	27826W	1	Panel, control box cover	
11	Page 13	1	Assembly, control panel	
12	61045	8	Nut, 10-32 sflg	
13	60175	12	Screw, .250-20x.500 sflg hex	
14	15424	12	Nut, .250-20 cage	
15	Page 12	1	Assembly, outlet panel	
16	27864B	1	Panel, lug box side	

AIR FILTER ASSEMBLY



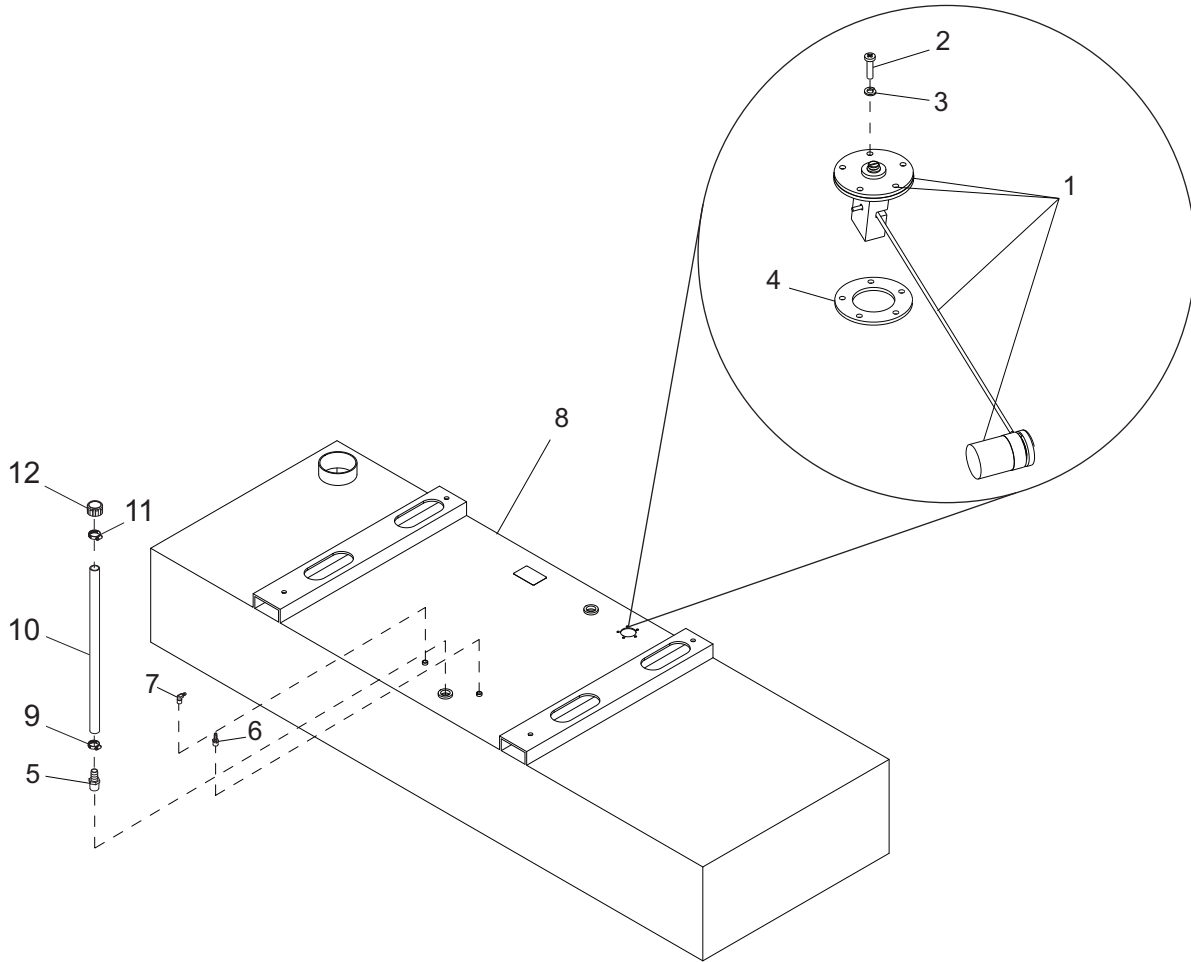
ITEM	PART NO.	QTY	DESCRIPTION	NOTES
1	22967	1	Filter, air	
2	61061	2	Screw, .312-18x.875 std hex	
3	60303	2	Nut, .312-18 nylock	
4	60009	1	Screw, M8-1.25x25 sflg hex	
5	60072	1	Screw, M12-1.75x25 sflg hex	
6	27960B	1	Bracket, air filter	
7	24518	1	Gauge, filter restriction	
8	19717	2	Clamp, hose - SAE 064 (3.56-4.50)	
9	27946	1	Hose, air intake	
10	22874	1	Element, air filter	
11	19277	1	Cap, dust ejector	
12	22872	1	Insert, air hose reducer	

EXHAUST SYSTEM ASSEMBLY



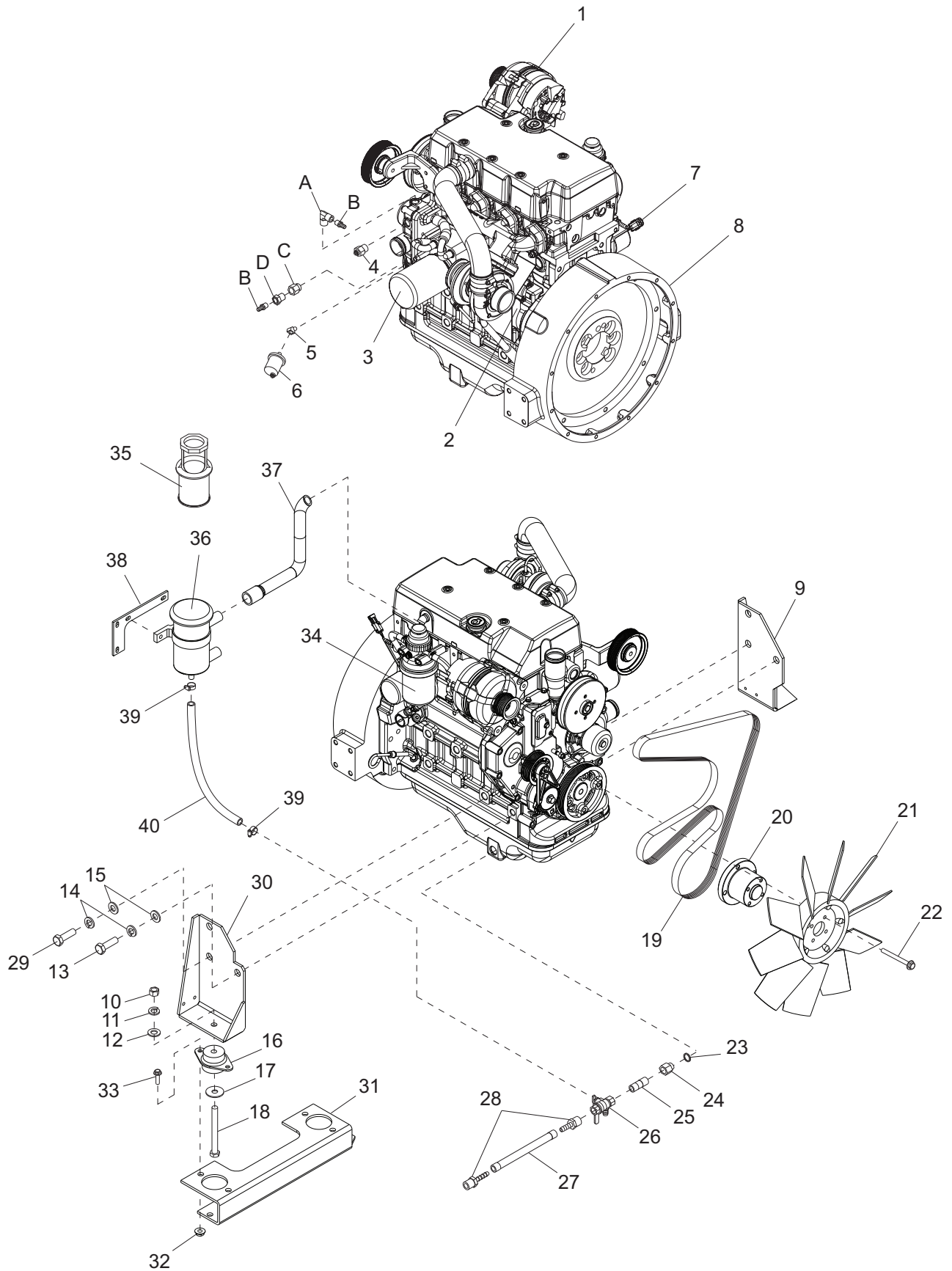
ITEM	PART NO.	QTY	DESCRIPTION	NOTES
1	22712	1	Clamp, V-band - 2.75	
2	26479	4 ft	Sleeve, high temp - 3.00	
3	19336	2	Clamp, hose - SAE 044 (2.31-3.25)	
4	27940	1	Pipe, exhaust	
5	25647	1	Cap, rain - 2.50	
6	61091	4	Screw, .312-18x1.0 sflg hd	
7	15425	4	Nut, .312-18 cage	
8	27963	1	Muffler, exhaust	
9	15550	2	Clamp, muffler - 2.5"	
10	27942	1	Pipe, exhaust	
11	26721B	1	Bracket, muffler support	
12	60507	2	Screw, .312-18x1.00 hex, SS	
13	60095	2	Nut, .312-18 sflg	

FUEL TANK ASSEMBLY



ITEM	PART	QTY	DESCRIPTION	NOTES
1	20571	1	Sender, fuel	
2	60062	5	Screw, 10-32x.750 pan hd phil	
3	60252	5	Washer, #10 split lock	
4	22323	1	Gasket, fuel sending unit	
5	21451	1	Fitting, strt - 1.00MNPTx1.00 barb	
6	15142	1	Fitting, strt - .250NPTx.312 barb	
7	15693	1	Fitting, 90° - .250NPTx.312 barb, brass	
8	27719B	1	Tank, fuel - 110 gal	
9	62243	1	Clamp, hose - SAE 016 (.68-1.50)	
10	50019	3.00 ft	Hose, fuel - 1"	
11	62040	1	Clamp, fuel hose - 1.50 crimp style	
12	26379	1	Vent, plastic fuel 1.00 ID	

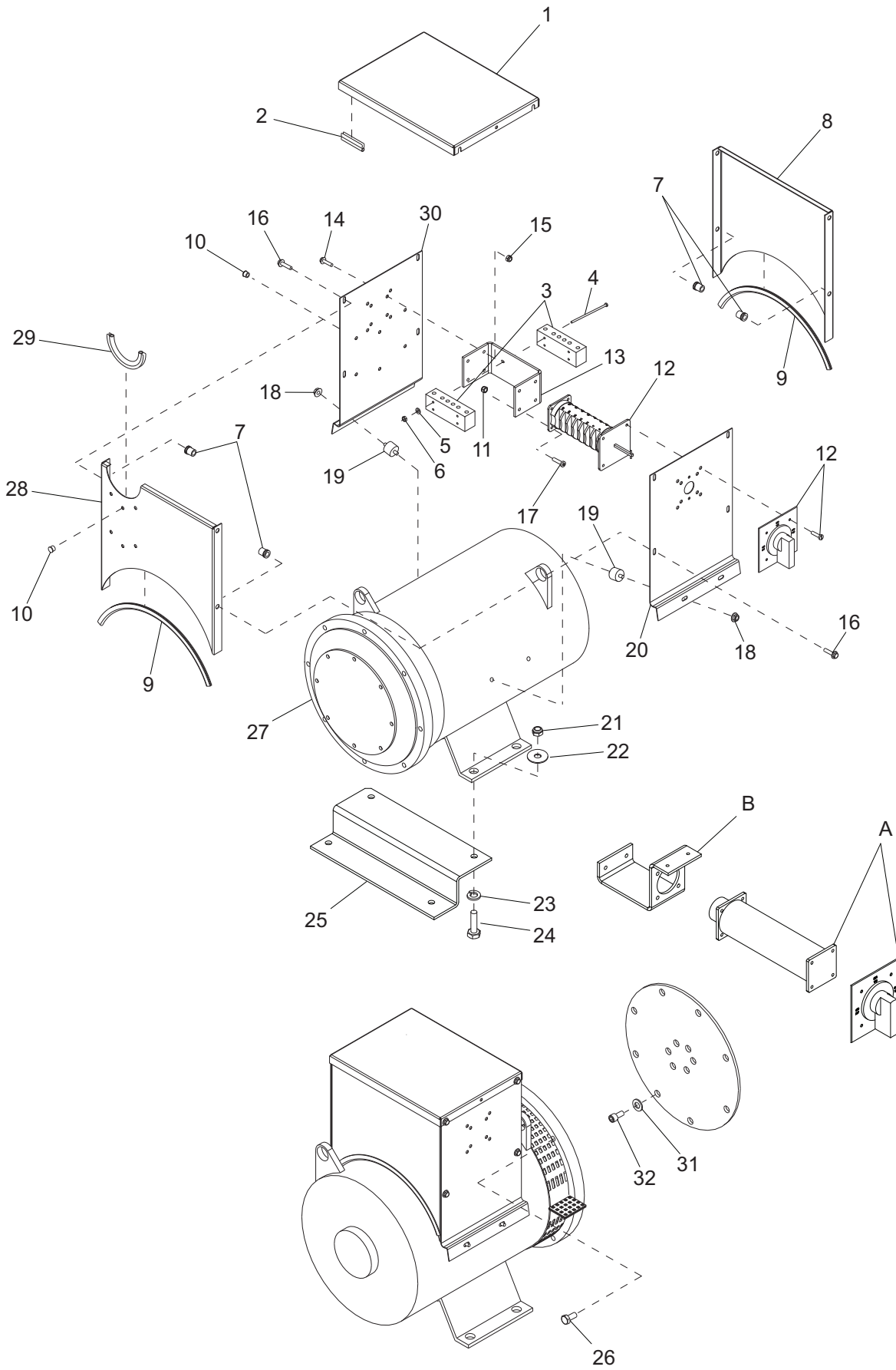
ENGINE ASSEMBLY



ITEM	PART	QTY	DESCRIPTION	NOTES
1	26270	1	Alternator, engine - 35/55	
2	23105	1	Starter, engine - 4024/5030	
3	29487	1	Filter, oil - 4024TF/HF T3	
4	22690	1	Sensor, coolant temp. - M18x1.5	
5	22331	1	Fitting, 45-.125MNPTx.125FNPT, brass	
6	18106	1	Sensor, oil pressure	
7	26168	1	Sensor assy, mag pick-up	
8	26735	1	Engine, Deere 4024TF281 iT4	
9	27986B	1	Weldment, left engine mount	
10	61093	2	Nut, .500-13 hex	
11	61095	2	Washer, .500 split lock	
12	60012	2	Washer, M12 flat	
13	60489	2	Screw, M16-2.0x40 std hex	
14	60194	6	Washer, split lock M16	
15	60193	6	Washer, flat M16	
16	22788	2	Mount, rubber shock 350 lbs	
17	18085	2	Washer, .510 snub - 2.00/.130	
18	61104	2	Screw, .500-13x5.500 std hex	
19	24845	1	Belt, fan	
20	41048	1	Spacer, fan	
21	41121	1	Fan, pusher - 18.00 CW	
22	60715	4	Screw, M8x1.25x80 std hex	
23	19467	1	Seal, M22	
24	19307	1	Fitting, strt - .500FNPTxM22x1.5, brass	
25	60438	1	Nipple, pipe, .500NPT x close	
26	61165	1	Valve, ball .500NPTFx.50 hose barb	
27	50201	1	Hose, coolant - .625 ID	
28	60502	2	Fitting, .500MNPTx.625 hose barb	
29	60381	4	Screw, M16-2.0x50 std hex, G10.9	
30	27985B	1	Weldment, right engine mount	
31	27962B	1	Bracket, engine mount adapter	
32	60064	4	Nut, M10-1.50 sflg lock	
33	60018	4	Screw, M10-1.25x20 sflg hex	
34	23145	1	Filter, fuel - 4024/5030	
35	24552	1	Filter, oil recirculation	
36	24318	1	Kit, oil recirculation	
37	24170	1	Hose, OCV vent	
38	29698B	1	Bracket, oil recirculation	
39	19453	2	Clamp, hose - SAE 006 (.37-.87)	
40	50051	2.50 ft	Hose, fuel .375 ID 50 psi	
A	23146	1	Fitting, 90° - .250MNPTx.375FNPT, brs	Option: coolant heater
B	25931	2	Fitting, strt - .375NPTx.625 barb	Option: coolant heater
C	22866	1	Fitting, strt - .125FNPTxM14x1.5	Option: coolant heater
D	23391	1	Fitting, strt - .375FNPTx.125MNPT, brs	Option: coolant heater

Note: Engine and generator parts used in all Magnum Power Products LLC equipment carry the Original Equipment Manufacturer (OEM) warranty unless otherwise stated. OEM warranty parts must be purchased through an OEM dealer. Please contact Magnum Power Products LLC with questions.

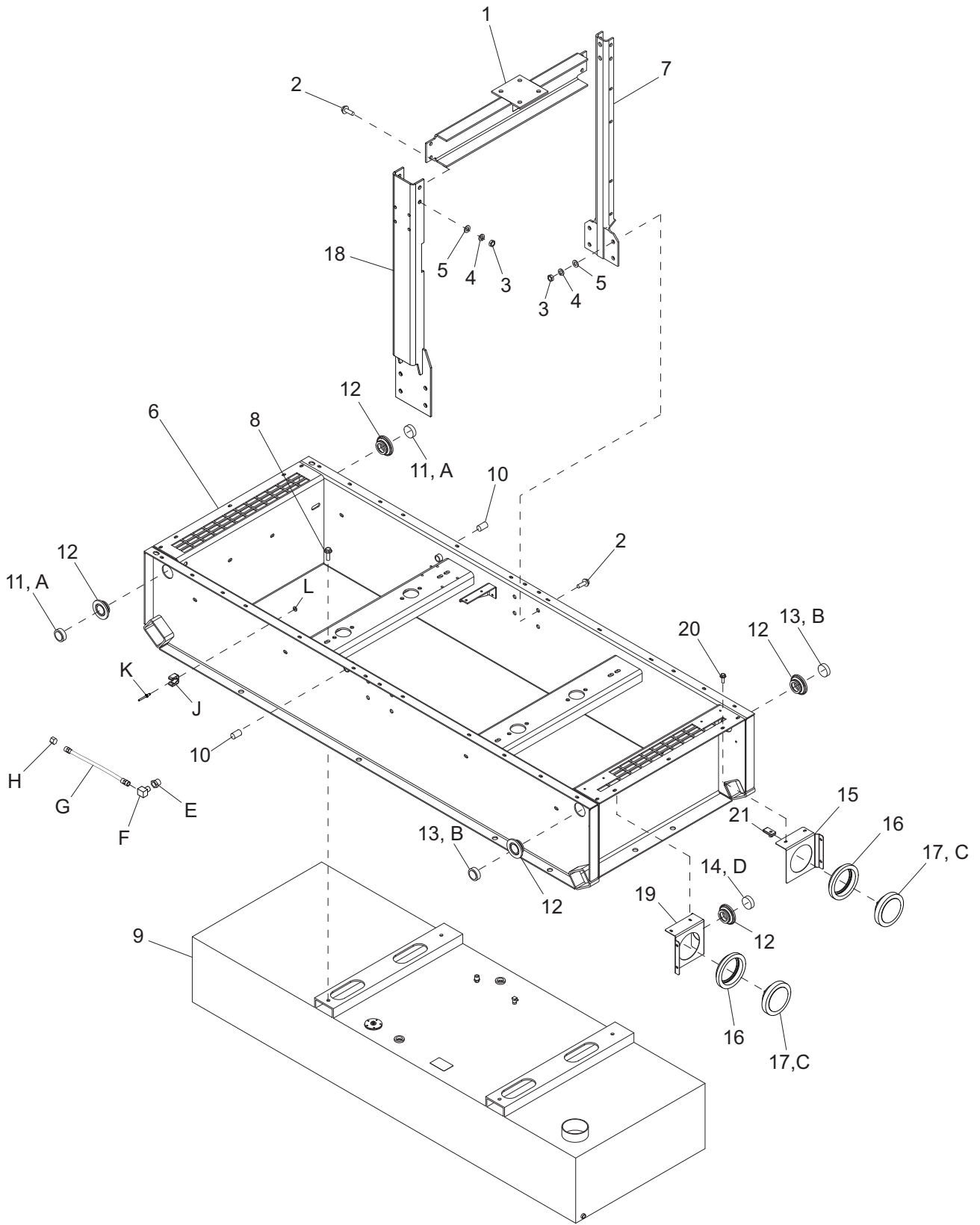
GENERATOR ASSEMBLY



ITEM	PART	QTY	DESCRIPTION	NOTES
1	22101B	1	Panel, generator box (top)	
2	19056	1	Seal, generator box (top)	
3	65481	2	Block, terminal - 6 pos	
4	60725	2	Screw, 8-32x2.50 pan head slot	
5	60237	2	Washer, #10 flat .495/.036 SAE	
6	60318	2	Nut, 8-32 hex	
7	60023	8	Insert, M6 threaded	
8	22103B	1	Panel, rear generator box	
9	19045	2	Seal, generator box	
10	65491	12	Plug, hole .281x.06 thrd black	
11	60038	4	Nut, M5-.80 nylock	
12	65456	1	Switch, phase selector - 63A, 3 pos	
13	22815B	1	Bracket, phase switch	
14	60115	4	Screw, M6-1.00x12 sflg hex	
15	60036	4	Nut, M6-1.00 sflg lock	
16	60135	8	Screw, M6-1.00x16 sflg hex	
17	60156	4	Screw, M5-0.80x16 pan phil	
18	60161	4	Nut, .250-20 sflg	
19	22283	4	Bolt, flex sandwich mount	
20	22285B	1	Panel, side generator box	
21	60307	2	Nut, .500-13 nylock	
22	60416	2	Washer, .500 flat 1.375/.090	
23	60276	2	Washer, .500 split lock	
24	61101	2	Screw, .500-13x1.500 std hex	
25	29616B	1	Bracket, gen mount adapter	
26	60055	12	Screw, M10-1.5x35 std hex	
27	24163	1	Generator, 283PSL1707	
28	22102B	1	Panel, front generator box	
29	19055	1	Seal, generator box	
30	22284B	1	Panel, side generator box	
31	60698	8	Washer, .375 flat - .875/.040, SS	
32	60717	8	Screw, .375-16x.750 soc hd	
A	65691	1	Switch, phase - 63A, 4 pos (Y,y,D,Z)	Option: voltage selector switch
B	28503B	1	Bracket, phase switch - 4 pos (YyDZ)	Option: voltage selector switch
-	24165	1	Generator, 284CSL1542	Option: Super Start (not shown)

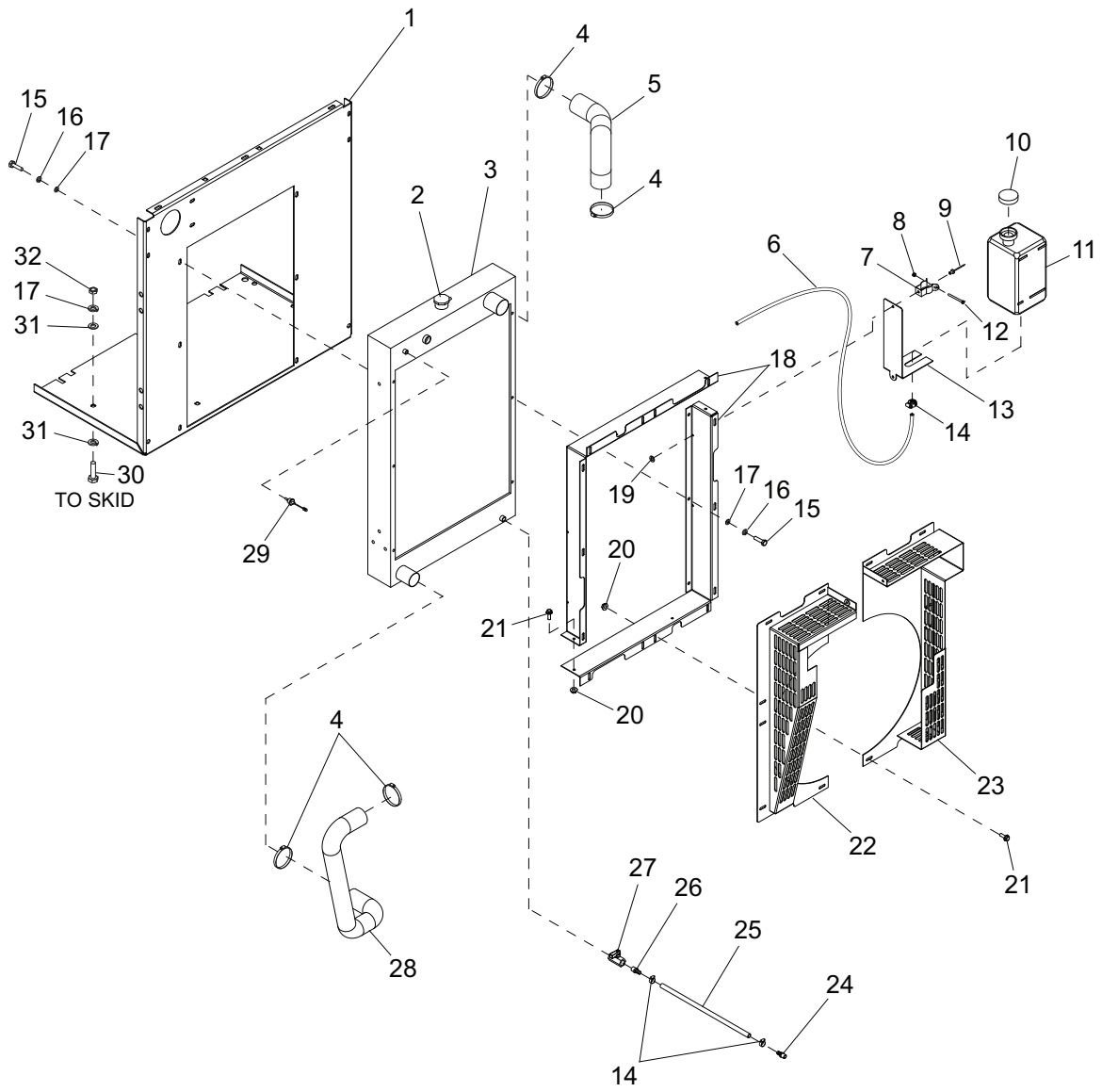
Note: Engine and generator parts used in all Magnum Power Products LLC equipment carry the Original Equipment Manufacturer (OEM) warranty unless otherwise stated. OEM warranty parts must be purchased through an OEM dealer. Please contact Magnum Power Products LLC with questions.

SKID ASSEMBLY



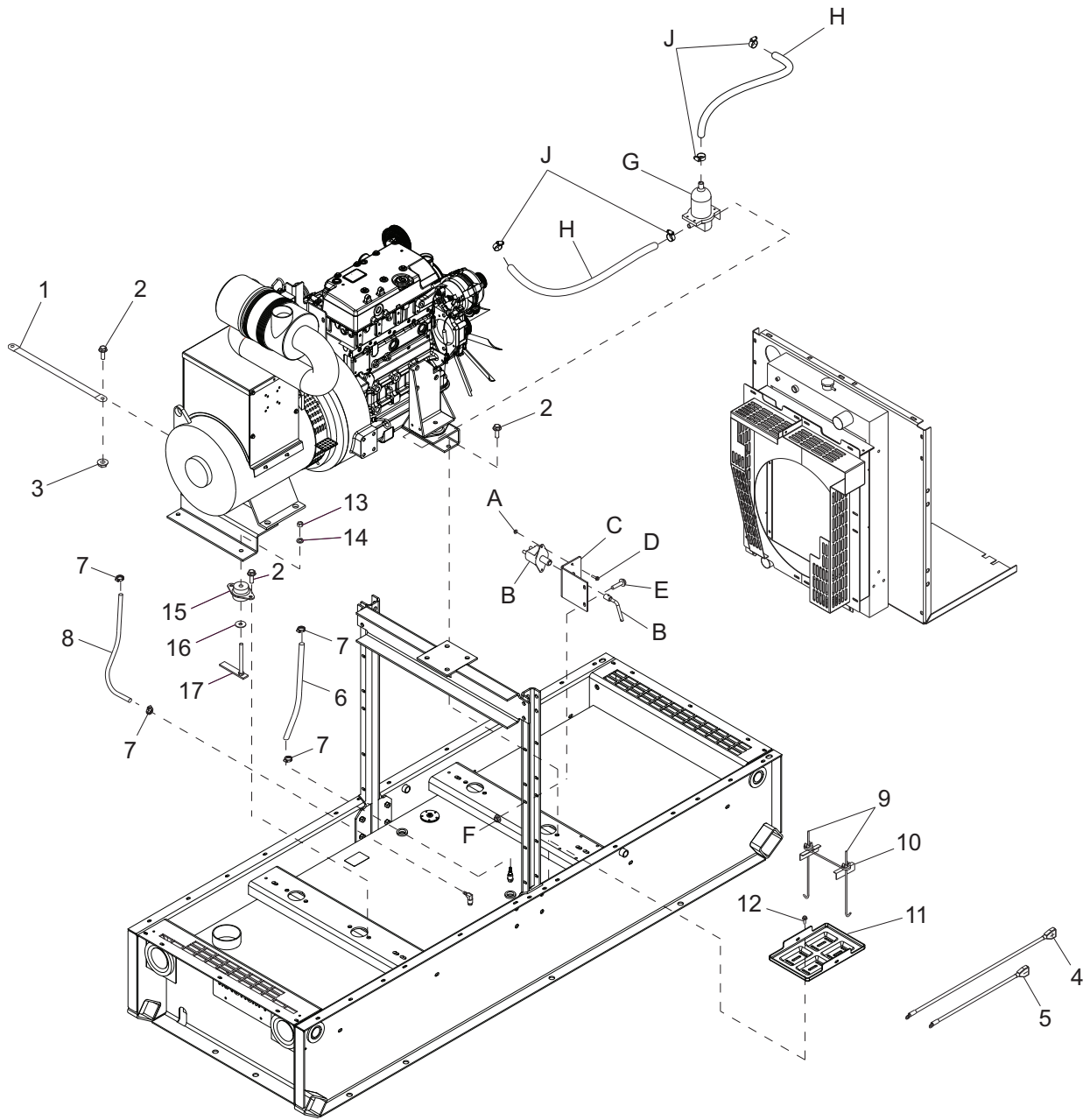
ITEM	PART	QTY	DESCRIPTION	NOTES
1	27739B	1	Weldment, top lift structure	
2	60202	4	Screw, M12-1.75x35 sflg hex	
3	60013	12	Nut, M12-1.75 hex, class 10	
4	60204	12	Washer, .500 split lock	
5	60012	12	Washer, M12 flat	
6	27660B	1	Weldment, skid	
7	22924B	1	Weldment, lift support	
8	60065	4	Screw, M12-1.75x40 sflg hex	
9	Page 19	1	Fuel tank assembly	
10	18394	2	Plug, .500NPT x hex socket	
11	66396	2	Light, clearance, 2.0", amber	
12	66394	5	Grommet, sealed beam light	
13	66397	2	Light, clearance, 2.0", red	
14	66395	1	Light, utility, 2.0", clear	
15	29673B	1	Bracket, rear light right side	
16	10221	2	Grommet, rear light, rubber 4.5"	
17	10220	2	Light, rear tail/turn, round	
18	29494B	1	Weldment, lift structure	
19	29674B	1	Bracket, rear light left side	
20	60479	8	Screw, .250-20x1.00 sflg hex	
21	61089	8	Nut, .250-20 U-clip	
A	66702	2	Light, clearance, 2.0" amber	Option: LED
B	66703	2	Light, clearance, 2.0" red	Option: LED
C	66701	2	Light, rear tail/turn, round	Option: LED
D	66704	1	Light, utility, 2.0" clear	Option: LED
E	22570	1	Fitting, str - .375FNPTx.500MNPT	Option: oil drain (tandem trailer)
F	15396	1	Fitting, 90° .375MNPTx.375FMPT, brs	Option: oil drain (tandem trailer)
G	19168	1	Hose assy, radiator drain,	Option: oil drain (tandem trailer)
H	19300	1	Fitting, pipe, .375 hex cap	Option: oil drain (tandem trailer)
J	19041	1	Clip, spring holder	Option: oil drain (tandem trailer)
K	60231	1	Rivet, .188 dia x .375 to .500 grip	Option: oil drain (tandem trailer)
L	60237	1	Washer, flat SAE #10	Option: oil drain (tandem trailer)

COOLING SYSTEM ASSEMBLY



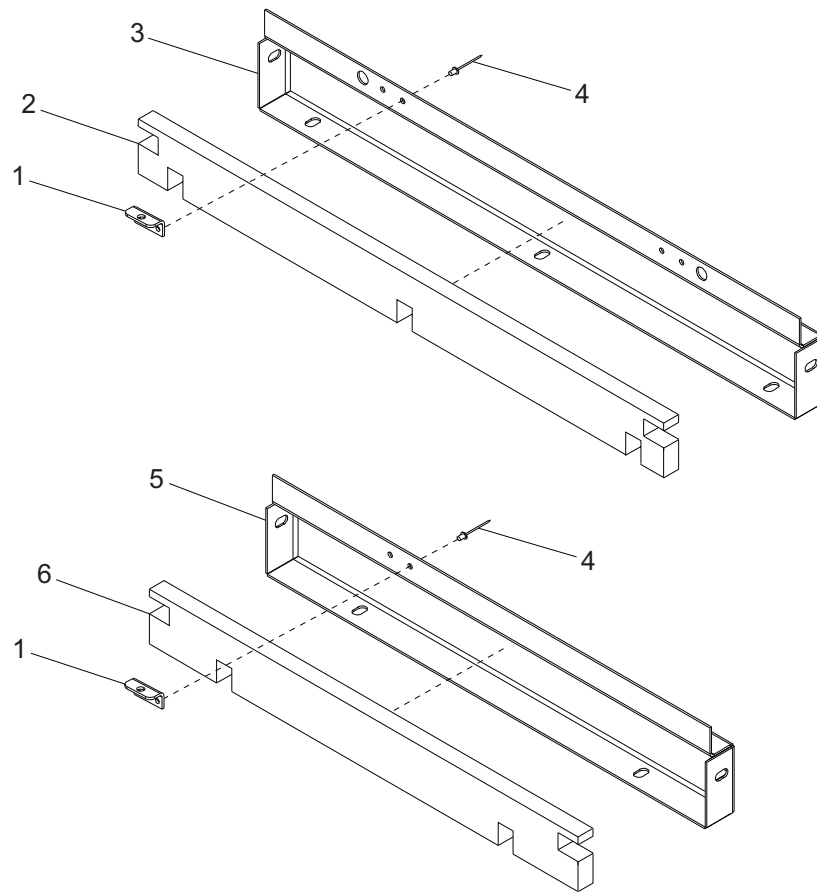
ITEM	PART NO.	QTY	DESCRIPTION	NOTES
1	29623B	1	Panel, bulkhead	
2	19221	1	Cap, radiator pressure - small, 10 psi	
3	41257	1	Radiator	
4	60660	4	Clamp, hose - SAE 032 (1.56-2.50)	
5	41045	1	Hose, upper radiator	
6	50018	3.92 ft	Hose, fuel - .312 ID 50 psi	
7	19726	1	Clamp, overflow jug	
8	60144	1	Nut, .250-20 nylock	
9	60268	2	Rivet, .188 dia x .126 to .250 grip, SS	
10	19714	1	Cap, overflow jug	
11	23134	1	Jug, overflow 3.5 qt	
12	60518	1	Screw, .250-20x1.5 std hex	
13	23342B	1	Bracket, overflow jug	
14	60777	3	Clamp, hose - .312 crimp style	
15	60168	12	Screw, .312-18x.750 std hex	
16	60271	18	Washer, split lock .312	
17	60119	12	Washer, flat .312	
18	29614B	2	Radiator shroud	
19	60041	2	Washer, flat M5	
20	60161	14	Nut, .250-20 sflg hex	
21	60175	15	Screw, .250-20x.50 sflg hex	
22	41011B	1	Weldment, fan guard - left	
23	41012B	1	Weldment, fan guard - right	
24	60999	1	Fitting, strt - .500MNPTx.312 barb, brs	
25	50018	.850 ft	Hose, .312 ID, 50 psi	
26	19180	1	Fitting, strt - .375MNPTx.312 barb	
27	62032	1	Valve, ball .375NPTF	
28	27889	1	Hose, lower radiator	
29	65592	1	Sensor, low coolant	
30	60507	6	Screw, .312-18x1.000 std hex, SS	
31	60340	12	Washer, .312 flat .875/.040, SS	
32	60285	6	Nut, .312-18 hex	

ENGINE TO SKID ASSEMBLY



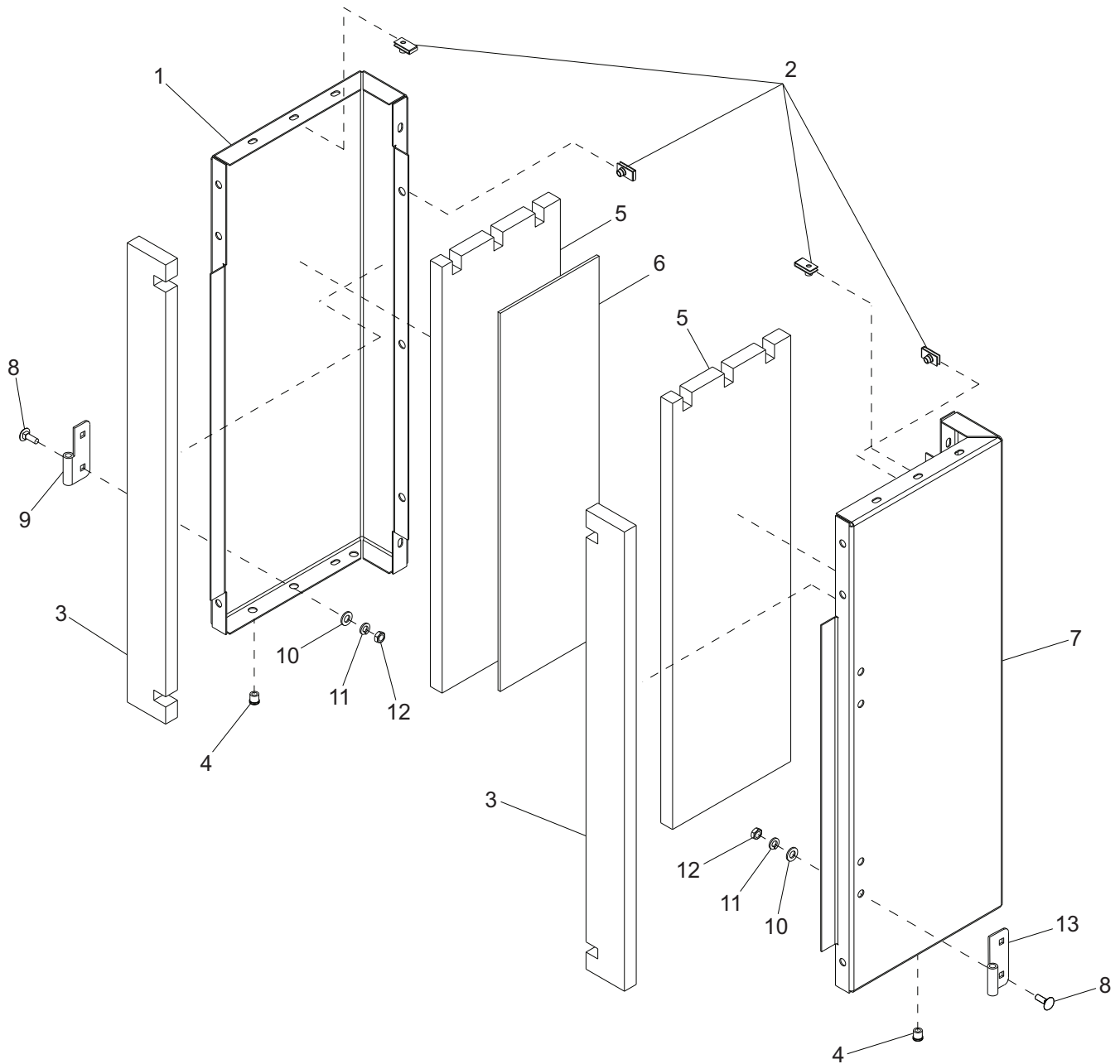
ITEM	PART	QTY	DESCRIPTION	NOTES
1	19042	1	Strap, braided ground - 10 in	
2	60018	9	Screw, M10-1.25x20 sflg hex	
3	60064	3	Nut, lock M10-1.50 sflg hex	
4	24777	1	Cable, red battery 54" - 2 GA, 3/8 lug	
5	24778	1	Cable, black battery 15" - 2 GA, 1/2 lug	
6	50018	3.25 ft	Hose, fuel - .312 ID, 50 psi SAE 30R7	
7	14216	4	Clamp, hose SAE 04 (.21-.62) mini	
8	50018	1.5 ft	Hose, fuel - .312 ID, 50 psi SAE 30R7	
9	60984	2	Bolt, J - .250-20x7.00	
10	14682	1	Bracket, battery hold down	
11	14145	1	Battery tray	
12	60353	4	Screw, .375-16x1.00 flg hex	
13	60307	2	Nut, .500-13 nylock	
14	60416	2	Washer, .500 flat 1.375/.090	
15	22788	2	Mount, rubber shock, 350 lbs	
16	18085	2	Washer, .510 snub	
17	27034	2	Weldment, anti-turn bolt 1/2"x3.5"	
A	60161	2	Nut, .250-20 sflg	Option: battery disconnect
B	21489	1	Battery disconnect switch - 500A cont.	Option: battery disconnect
C	23178B	1	Bracket, battery disconnect	Option: battery disconnect
D	60479	2	Screw, .250-20x1.000 sflg hex	Option: battery disconnect
E	61091	2	Screw, .312-18x1.00 sflg hex	Option: battery disconnect
F	60020	2	Nut, M8-1.25 sflg	Option: battery disconnect
G	25914	1	Coolant heater, 120V/500W	Option: coolant heater - 150 CI or less,
H	50201	5.0 ft	Hose, coolant - .625 ID, 200 psi	Option: coolant heater
J	60365	4	Clamp, hose - SAE 010 (.56-1.06)	Option: coolant heater

SMALL SIDE & END PANEL ASSEMBLIES



ITEM	PART	QTY	DESCRIPTION	NOTES
1	20916Z	3	Bracket, prop rod	
2	20930	6	Foam, small panel	
3	20888W	6	Panel, small (ALU)	
4	60268	6	Rivet, .188 dia x .126 to .250 grip, SS	
5	20898W	1	Panel, small (left rear) (ALU)	
6	20931	1	Foam, small panel	

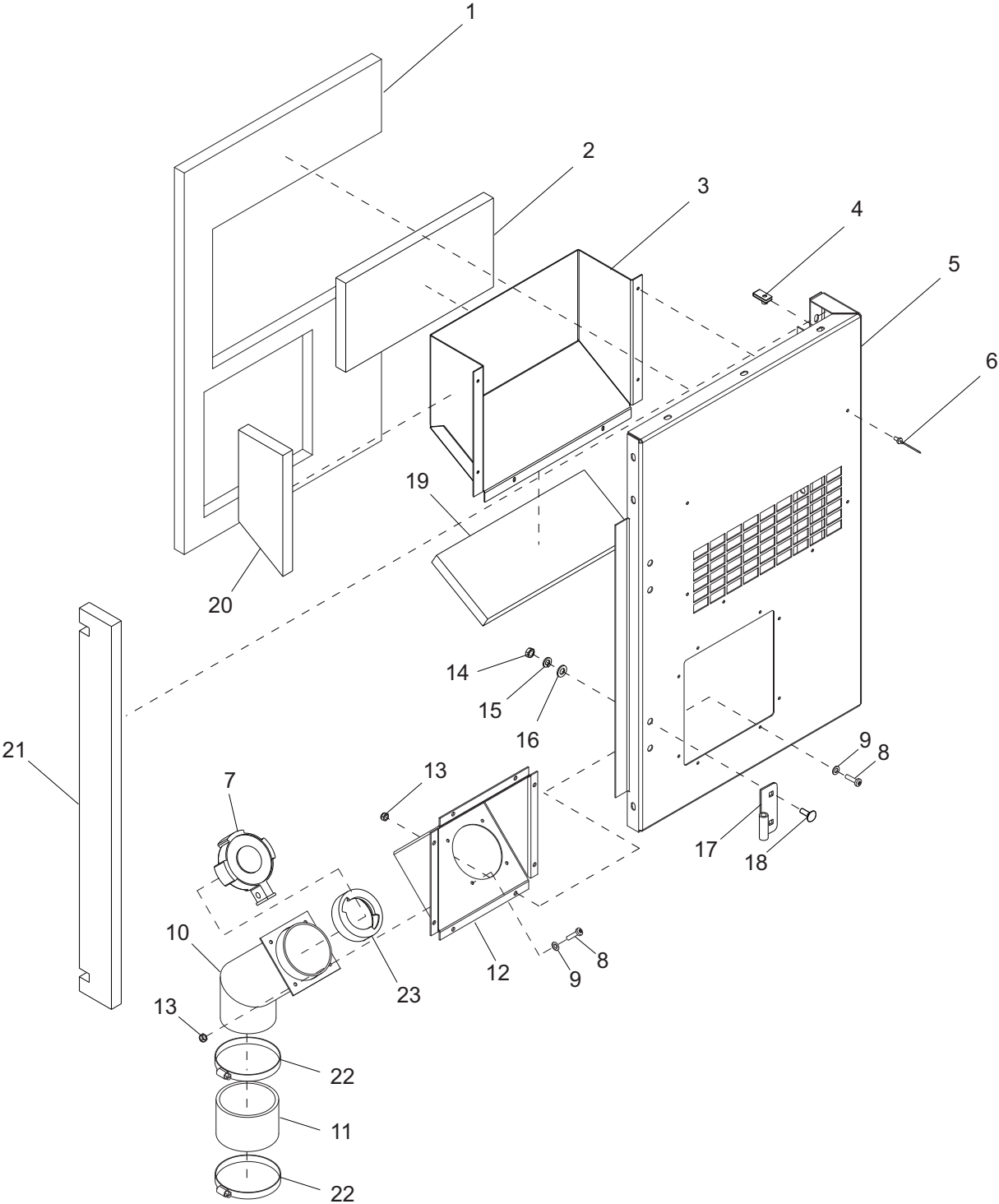
FRONT CORNER ASSEMBLY



ITEM	PART	QTY	DESCRIPTION
1	22782W	1	Panel, left front corner
2	60505	12	Nut, U-clip .312-18 long type
3	20932	2	Foam, corner common
4	60022	8	Insert, M8 threaded
5	22827	2	Foam, left front corner
6	27988	1	Insulation, ceramic
7	22781W	1	Panel, right front corner
8	61066	8	Screw, .312-18x1.00 carr sqr, SS
9	18462	2	Hinge, upper left (female)
10	60243	8	Washer, .25 flat .735/.060
11	60271	8	Washer, .312 split lock
12	60285	8	Nut, .312-18 hex
13	18460	2	Hinge, upper right (female)

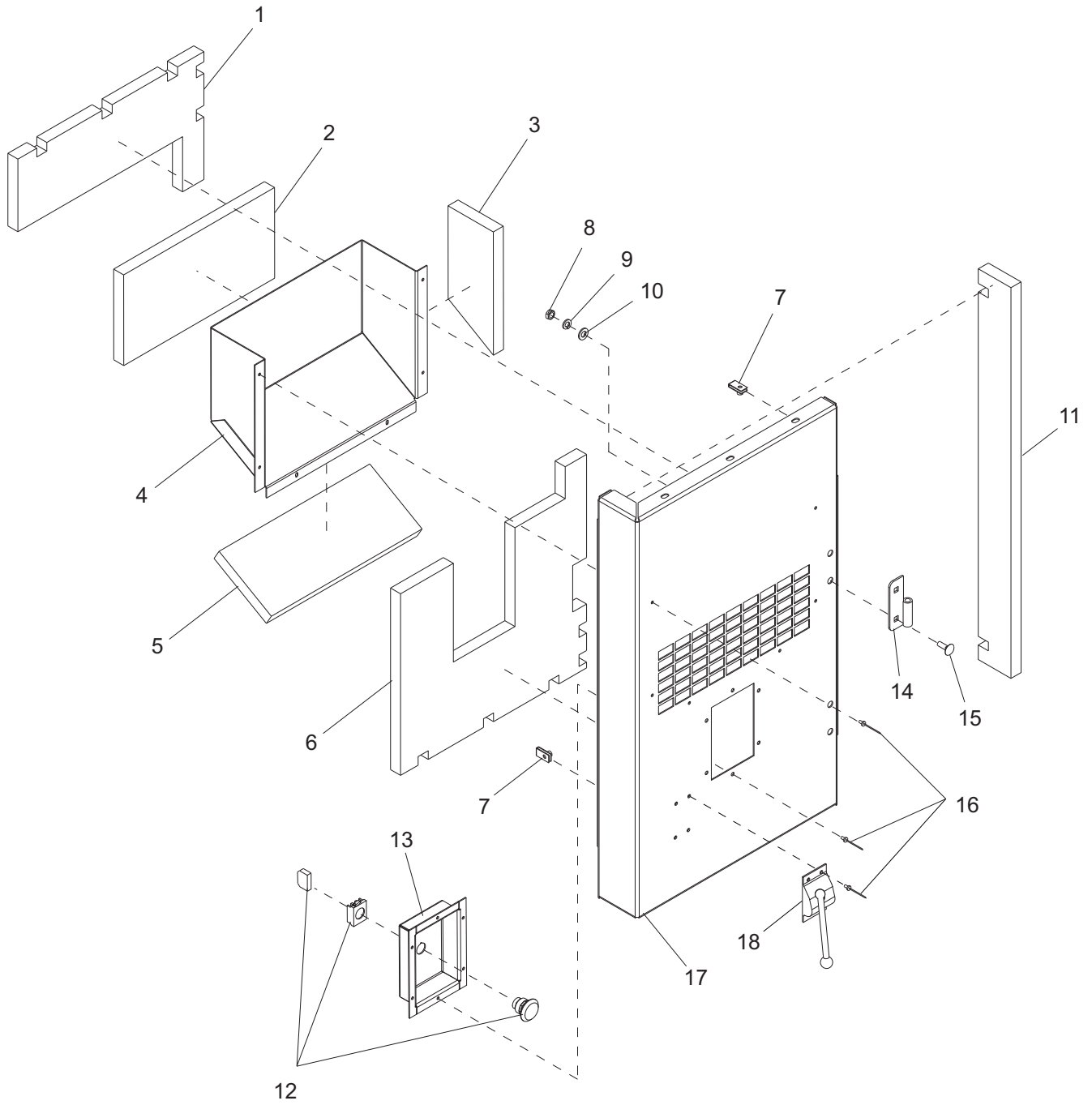
NOTES

LEFT REAR CORNER ASSEMBLY



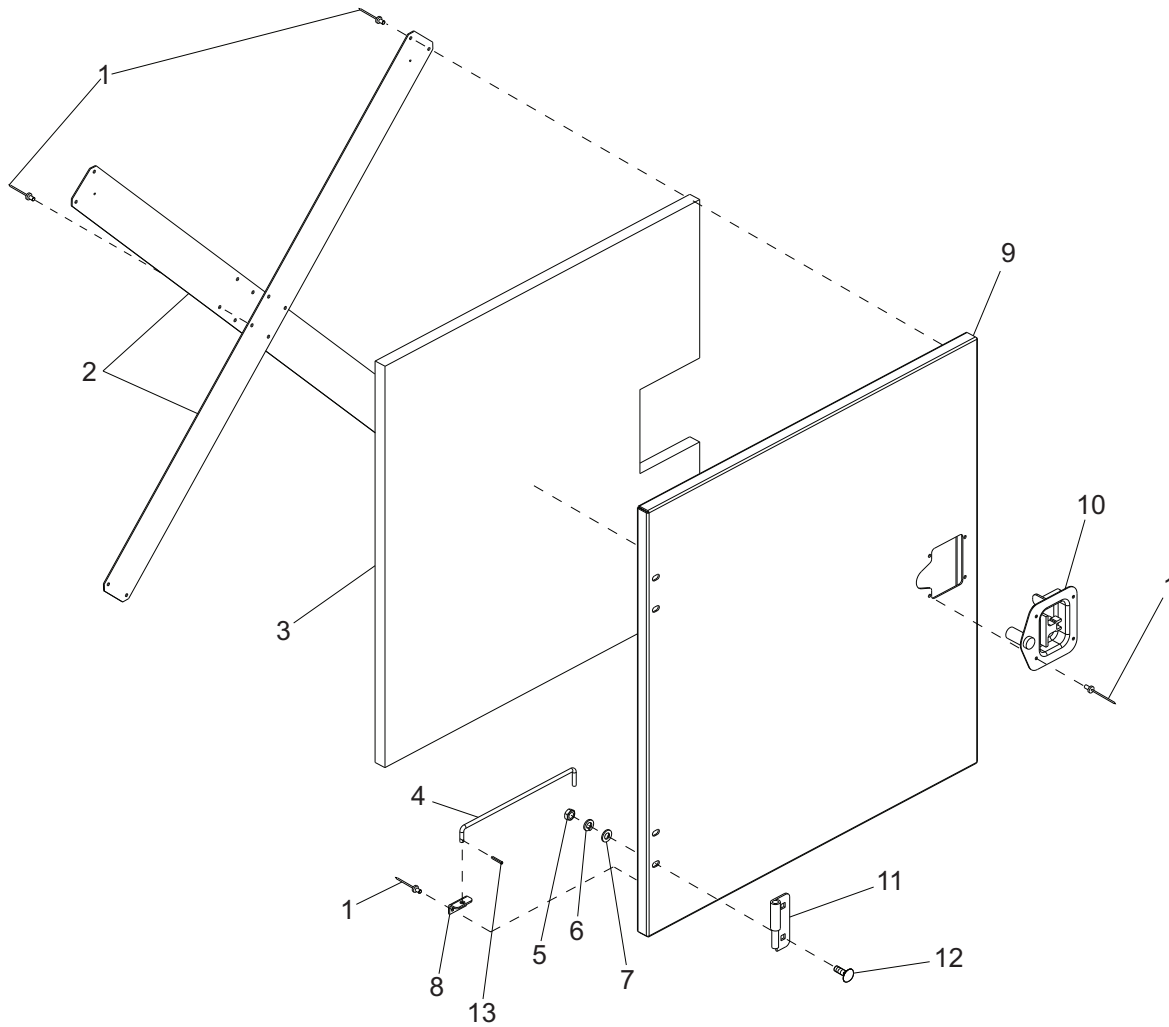
ITEM	PART	QTY	DESCRIPTION	NOTES
1	27744	1	Foam, rear right corner	
2	22843	1	Foam, side air duct - face	
3	22786W	1	Duct, side air	
4	60505	3	Nut, U-clip .312-18 long type	
5	27742W	1	Panel, left rear corner	
6	60268	6	Rivet, .188 dia x .126 to .250 grip, SS	
7	23707	1	Cap, fuel fill - 3.50	
8	60850	12	Screw, 10-24x.750 pan phil	
9	60067	12	Washer, #10 flat .435/.060, SS	
10	23710B	1	Weldment, 3.50 fuel fill neck - black	
11	19612	1	Hose, air/fuel 4.00"	
12	23697B	1	Panel, fuel inlet - black	
13	60457	12	Nut, 10-24 nylock	
14	60285	4	Nut, .312-18 hex	
15	60271	4	Washer, .312 split lock	
16	60243	4	Washer, .250 flat .735/.060	
17	18460	2	Hinge, upper right (female)	
18	61066	4	Screw, .312-18x1.00 carr sqr, SS	
19	22844	1	Foam, side air duct - lower	
20	22841	1	Foam, side air duct - right	
21	20932	1	Foam, corner common	
22	19842	2	Clamp, hose - SAE 072 (4.06-5.00)	
23	23830	1	Insert, plastic fuel 3.5"	

RIGHT REAR CORNER ASSEMBLY



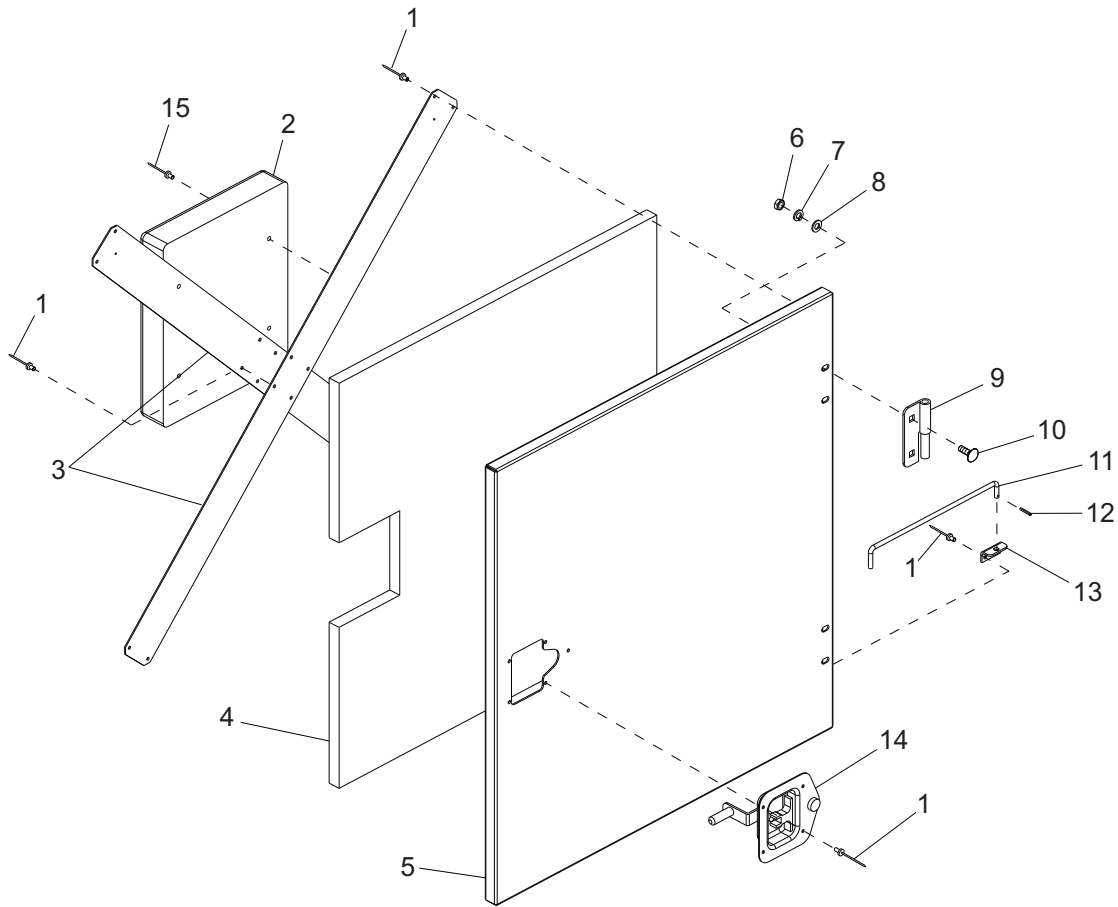
ITEM	PART	QTY	DESCRIPTION	NOTES
1	22839	1	Foam, rear right upper corner	
2	22843	1	Foam, side air duct - face	
3	22842	1	Foam, side air duct - left	
4	22786W	1	Duct, side air	
5	22844	1	Foam, side air duct - lower	
6	22840	1	Foam, rear right lower corner	
7	60505	6	Nut, U-clip - .312-18 long type	
8	60285	4	Nut, .312-18 hex	
9	60271	4	Washer, .312 split lock	
10	60243	4	Washer, .250 flat .735/.060	
11	20932	1	Foam, corner common	
12	22550	1	Switch, emergency stop	
13	22816B	1	Panel, emergency stop	
14	18462	2	Hinge, upper left (female)	
15	61066	4	Screw, .312-18x1.000 carr sqr, SS	
16	60268	16	Rivet, .188 dia x .126 to .250 grip, SS	
17	22783W	1	Panel, right rear corner	
18	62225	1	Latch, door - stainless cable w/ball	

LEFT FRONT DOOR ASSEMBLY



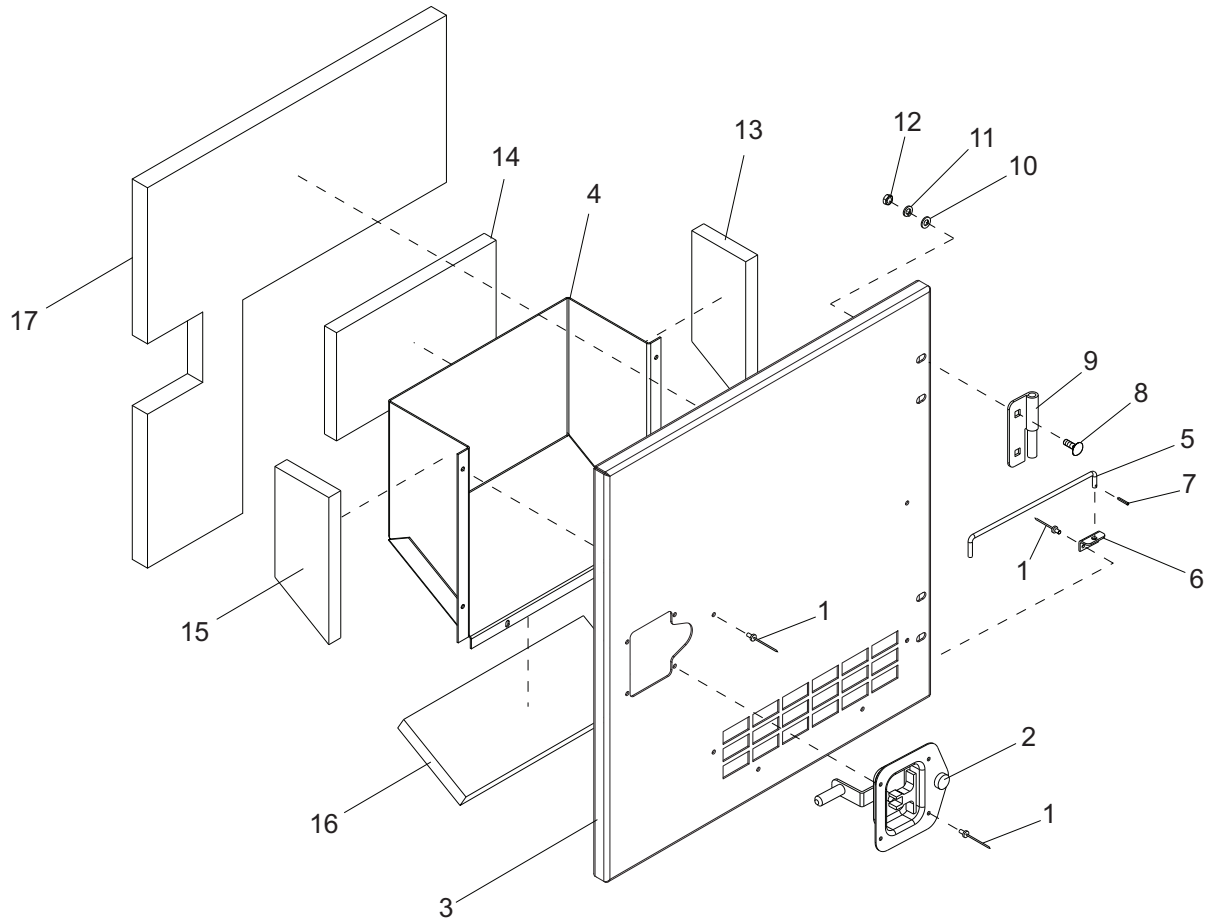
ITEM	PART	QTY	DESCRIPTION	NOTES
1	60268	18	Rivet, .188 dia x .126 to .250 grip, SS	
2	20952B	2	Brace, door small	
3	20969	1	Foam, door front small	
4	18900ZC	1	Rod, door prop	
5	60285	4	Nut, .312-18 hex	
6	60271	4	Washer, .312 split lock	
7	60243	4	Washer, .25 flat .735/.060	
8	20916Z	1	Bracket, prop rod	
9	20907W	1	Panel, front - small	
10	22497	1	Latch, T-handle - lft cw lock	
11	18459	2	Hinge, lower left (male)	
12	61066	4	Screw, .312-18x1.00 carr sqr, SS	
13	60048	1	Roll pin, .125x.625	
--	22515	1	Assembly, left front door	Items 1-13

RIGHT FRONT DOOR ASSEMBLY



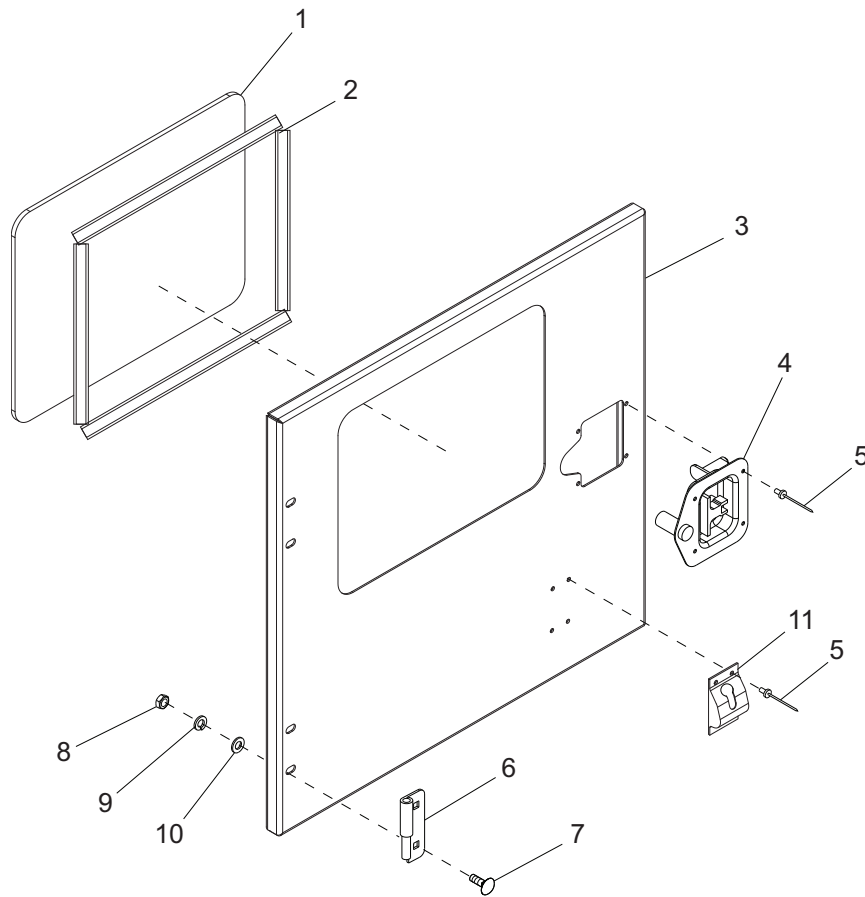
ITEM	PART	QTY	DESCRIPTION	NOTES
1	60268	18	Rivet, .188 dia x .126 to .250 grip, SS	
2	24540	1	Holder, manual (plastic)	
3	20952B	2	Brace, door small	
4	20969	1	Foam, door front - small	
5	21033W	1	Panel, door front right	
6	60285	4	Nut, .312-18 hex	
7	60271	4	Washer, .312 split lock	
8	60243	4	Washer, .250 flat .735/.060	
9	18461	2	Hinge, right (male)	
10	61066	4	Screw, .312-18x1.000 carr sqr, SS	
11	18900ZC	1	Rod, door prop	
12	60048	1	Roll pin, .125x.625	
13	20916Z	1	Bracket, prop rod	
14	22498	1	Latch, T-handle - rht ccw lock	
15	60231	4	Rivet, .188 dia x .375 to .500 grip	
--	22514	1	Assembly, right front door	Items 1-15

LEFT REAR DOOR ASSEMBLY



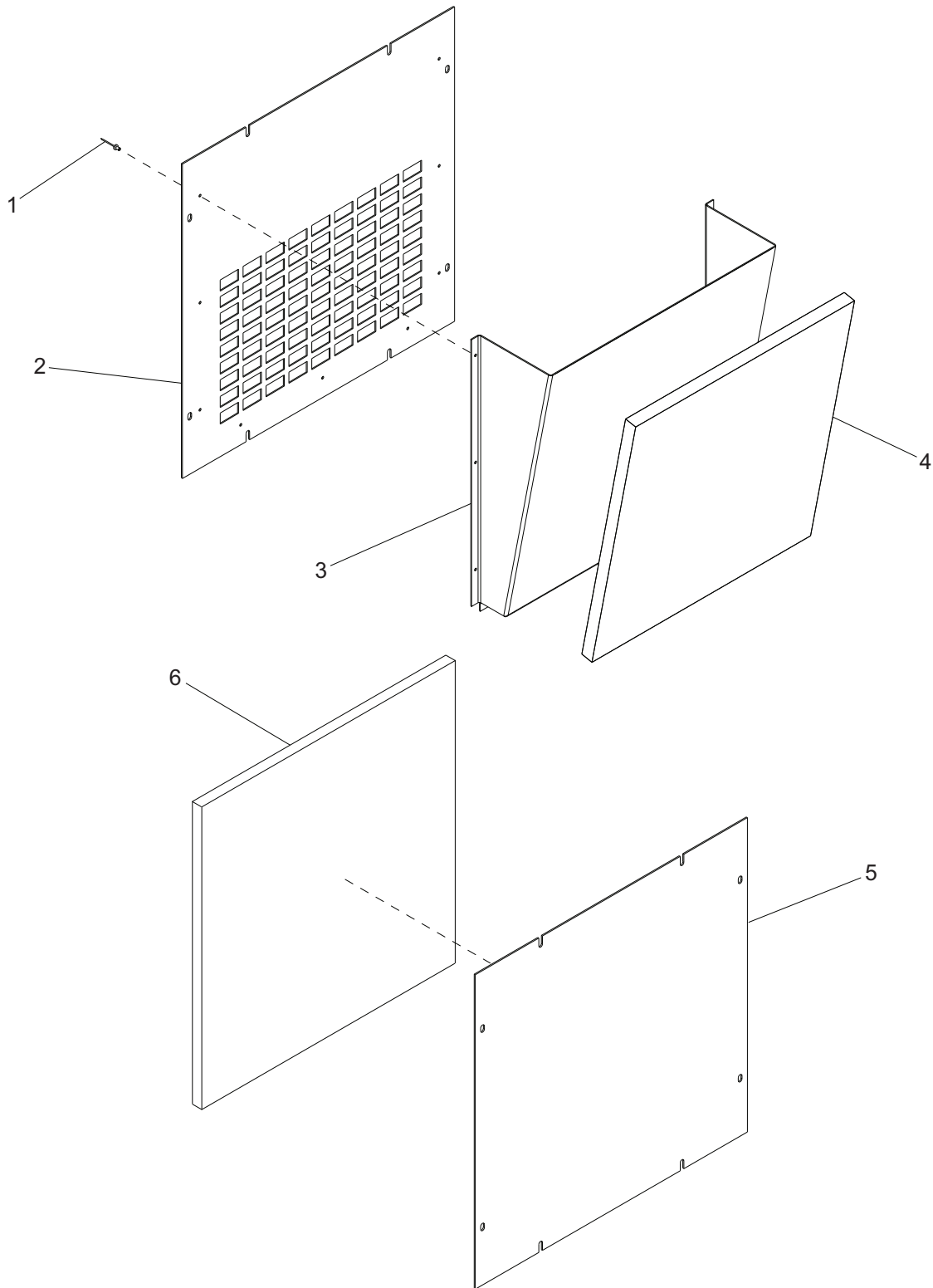
ITEM	PART	QTY	DESCRIPTION	NOTES
1	60268	12	Rivet, .188 dia x .126 to .250 grip, SS	
2	22498	1	Latch, T-handle - rht ccw lock	
3	22819W	1	Door, rear left	
4	22823W	1	Duct, rear left door	
5	18900ZC	1	Rod, door prop	
6	20916Z	1	Bracket, prop rod	
7	60048	1	Roll pin, .125x.625	
8	61066	4	Screw, .312-18x1.00 carr sqr, SS	
9	18461	2	Hinge, right (male)	
10	60243	4	Washer, .25 flat .735/.060	
11	60271	4	Washer, .312 split lock	
12	60285	4	Nut, .312-18 hex	
13	22842	1	Foam, side air duct, left	
14	22845	1	Foam, door duct - face	
15	22841	1	Foam, side air duct - right	
16	22846	1	Foam, door duct - lower	
17	22831	1	Foam, rear left door	
--	22821	1	Assembly, left rear door	Items 1-17

CONTROL DOOR ASSEMBLY



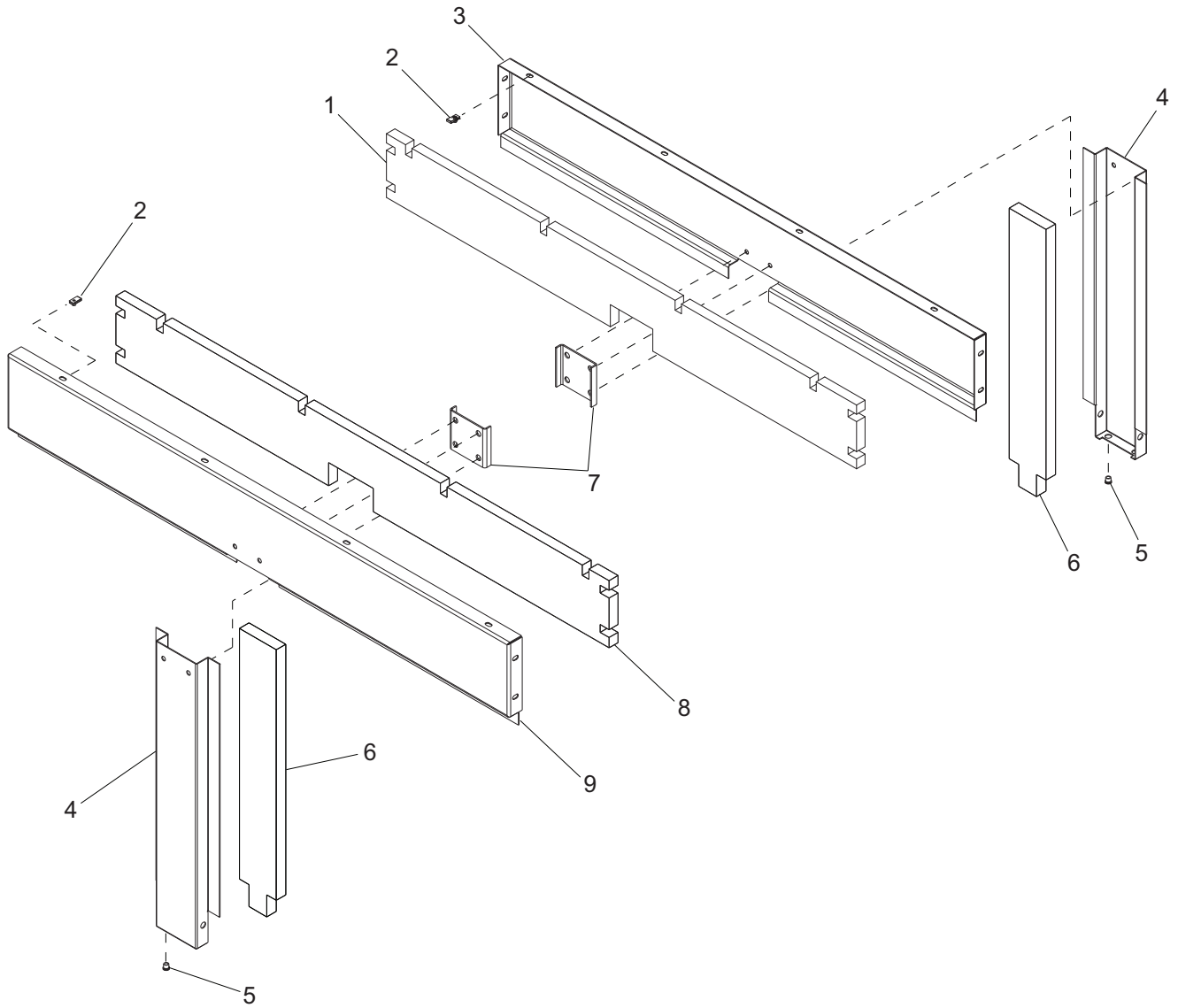
ITEM	PART	QTY	DESCRIPTION	NOTES
1	21477	1	Window, control door	
2	50192	4.58 ft.	Tape, .500" double-sided, VHB	
3	27830W	1	Door, control	
4	27987	1	Latch, T-handle - lft cw lock	
5	60268	8	Rivet, .188 dia x .126 to .250 grip, SS	
6	18459	2	Hinge, left (male)	
7	61066	4	Screw, .312-18x1.00 carr sqr, SS	
8	60285	4	Nut, .312-18 hex	
9	60271	4	Washer, .312 split lock	
10	60243	4	Washer, .25 flat .735/.060	
11	27703	1	Latch, door prop rod set - plastic	
--	27829	1	Assembly, control door	Items 1-11

END PANEL ASSEMBLIES



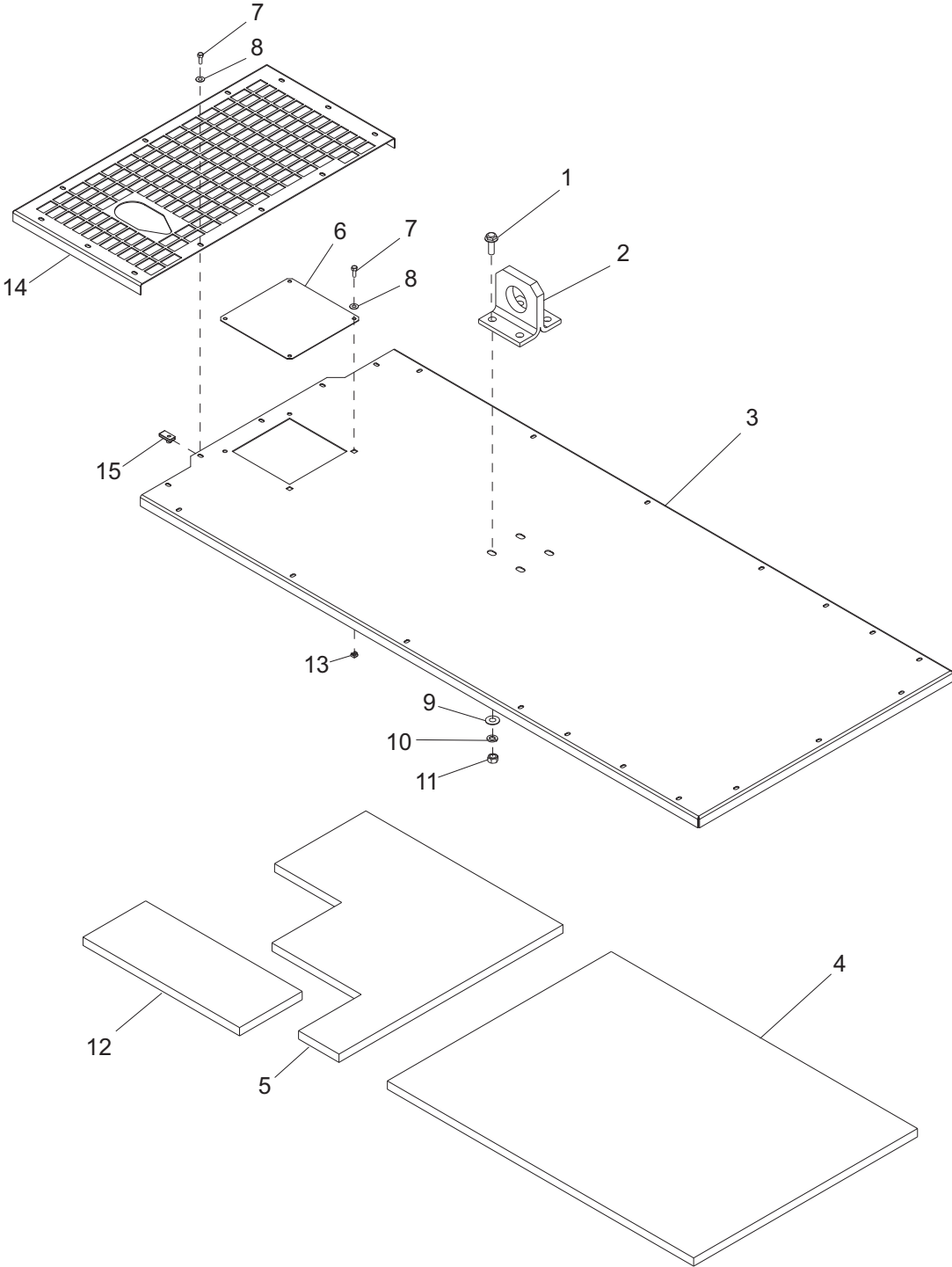
ITEM	PART	QTY	DESCRIPTION	NOTES
1	60268	9	Rivet, .188 dia x .126 to .250 grip, SS	
2	20877W	1	Panel , rear	
3	22730W	1	Duct, rear	
4	20933	1	Foam, rear duct	
5	20875W	1	Panel, front	
6	20936	1	Foam, front panel	

SIDE PANEL ASSEMBLIES



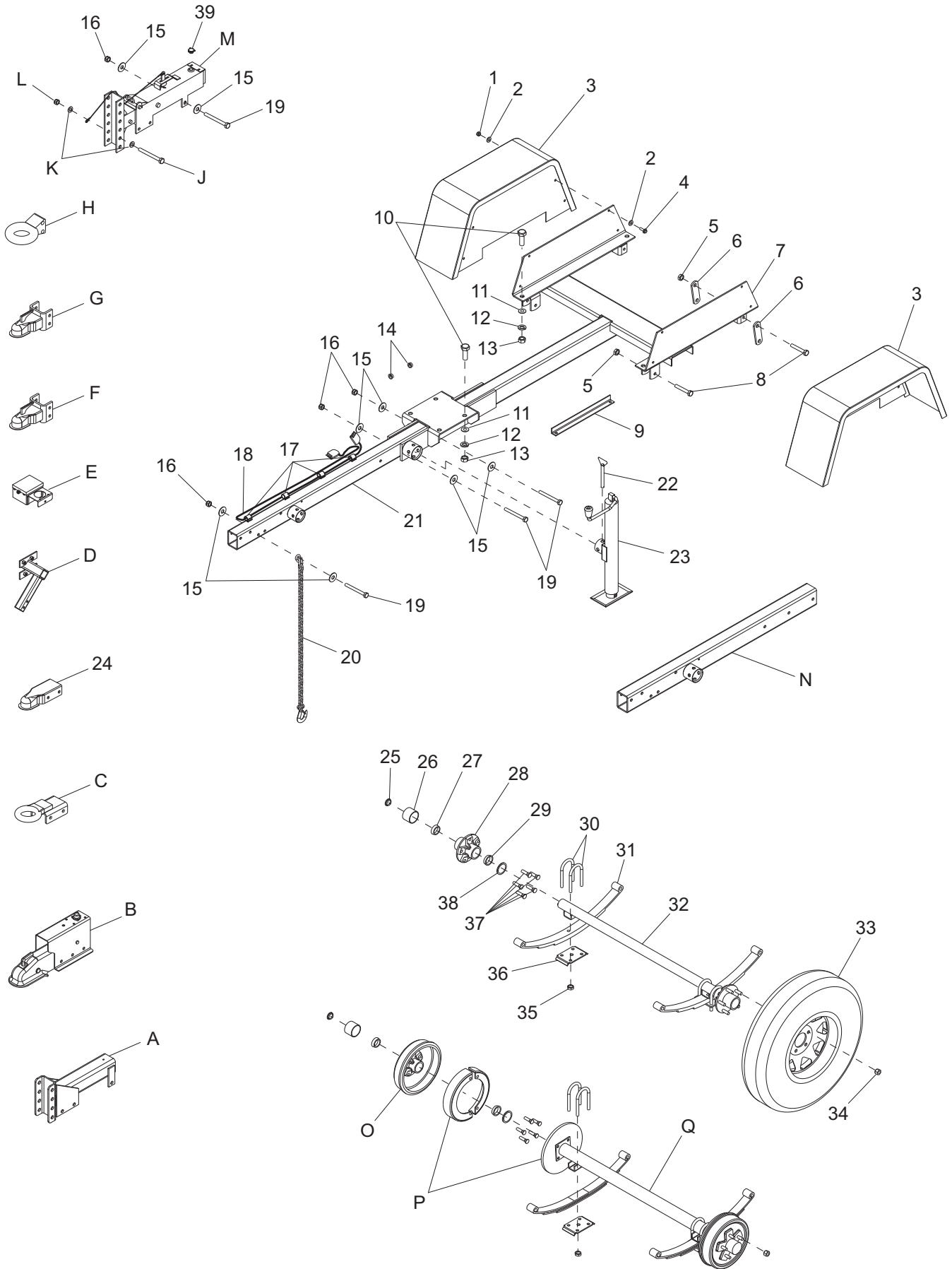
ITEM	PART	QTY	DESCRIPTION	NOTES
1	20925	1	Foam, top side right	
2	60505	8	Nut, U-clip .312-18 long type	
3	20890W	1	Panel, top side right	
4	20896W	2	Panel, center side	
5	60022	4	Insert, M8 threaded	
6	20929	2	Foam, center side	
7	20906W	2	Bracket, side stiffener	
8	20926	1	Foam, top side left	
9	20891W	1	Panel, top side left	

ROOF ASSEMBLY



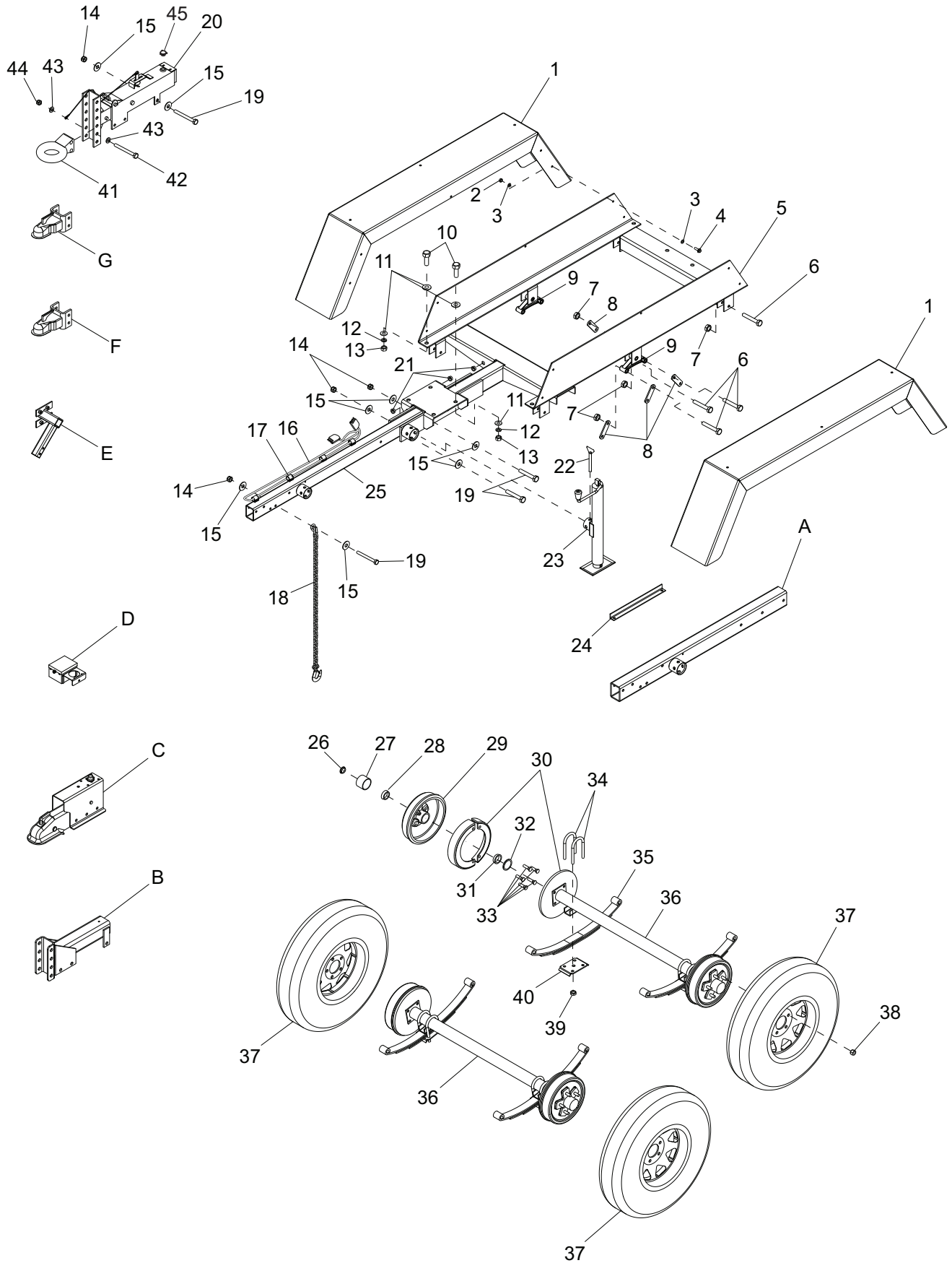
ITEM	PART	QTY	DESCRIPTION	NOTES
1	60065	4	Screw, M12-1.75x40 sflg hex	
2	22936B	1	Bracket, lifting eye	
3	27745W	1	Panel , roof	
4	29570	1	Foam, rear roof	
5	29571	1	Foam, front roof	
6	25053W	1	Panel, back access	
7	60507	4	Screw, .312-18x1.000 std hex, SS	
8	60452	4	Washer, .313 flat 1.125/1.00, SS	
9	60012	4	Washer, M12 flat	
10	60204	4	Washer, .500 split lock	
11	60013	4	Nut, M12-1.75 hex, class 10	
12	23361	1	Insulation, ceramic roof	
13	15425	2	Nut, .312-18 cage	
14	27746B	1	Panel, roof insert	
15	60505	24	Nut, U-clip .312-18 long type	

TRAILER ASSEMBLY - SINGLE AXLE



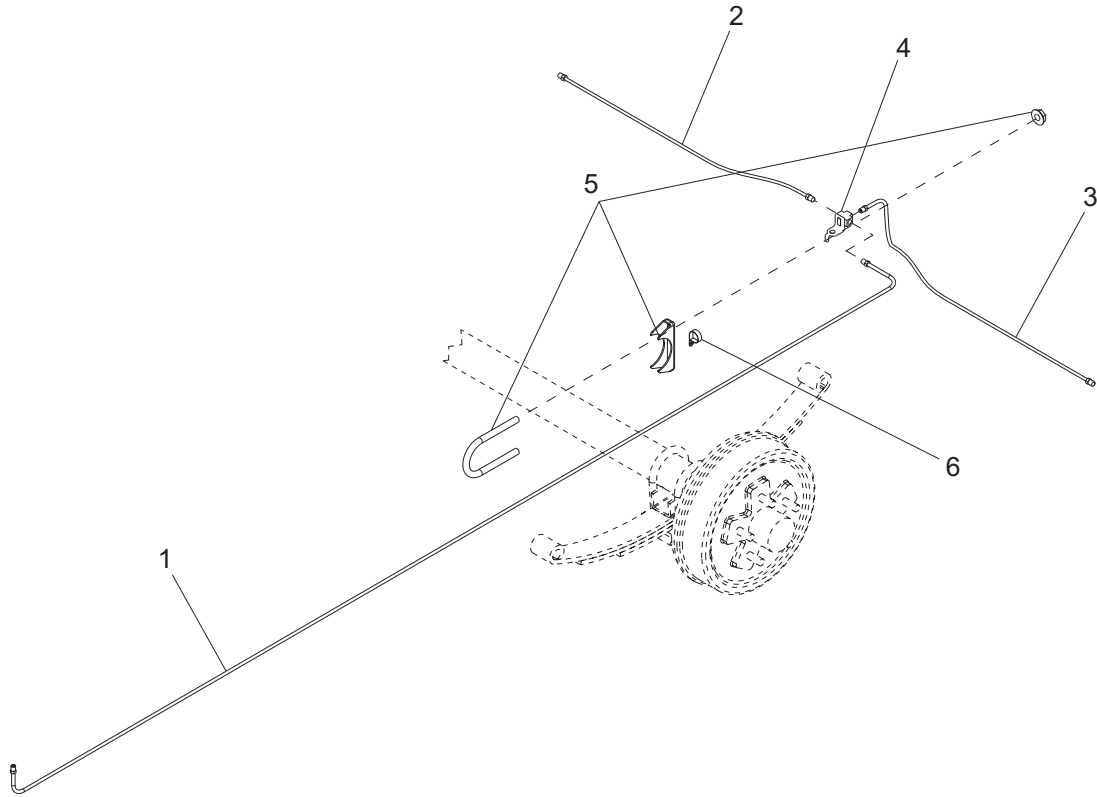
ITEM	PART	QTY	DESCRIPTION	NOTES
1	60140	8	Nut, .375-16 hex hd	
2	60386	16	Washer, flat .375	
3	22743B	2	Fender, single wheel	
4	60179	8	Screw .375-16x.750 hex hd	
5	60504	6	Nut, .562-18 lock hex	
6	19637	4	Plate, shackle bracket	
7	24811B	1	Weldment, trailer chassis	
8	60503	6	Screw, shackle .562-18x3.0 std hex	
9	24691B	1	Brace, tongue shipping	
10	60383	6	Screw, .750-10x1.500 hex hd	
11	60247	6	Washer, flat .750	
12	60248	6	Washer, split lock .750	
13	15293	6	Nut, .750-10 hex	
14	22340	2	Bushing, 1.00 ODx.75 ID	
15	60309	14	Washer, flat .500	
16	60307	7	Nut, .500-13 nylock	
17	61010	7	Clamp, tubing - .375 heavy duty	
18	23205	1	Harness, trailer	
19	60659	7	Screw, .500-13x5.000 hex hd	
20	23367	2	Chain, safety - 7800 lb rated	
21	24812B	1	Weldment, flip tongue	Non-adjustable
22	23256	1	Pin, jack - 2000 lb tube-mounted	
23	23254	1	Jack, top wind - 2000 lb tube-mounted	
24	15103	1	Coupler, 2.00" ball/3.00" channel	Non-adjustable
25	11254	2	Plug, grease cap - for zerk	
26	11253	2	Cap, grease - 3500 lb	
27	40956	2	Outer bearing, axle	
28	11276	2	Hub w/races, 3500 lb	
29	40954	2	Inner bearing	
30	11277	4	U-bolt, axle - 3500 lb	
31	11280	2	Leaf spring, 3500 lb	
32	18358	1	Axle, single (3500 lb), no brakes	
33	15540	2	Wheel, ST205/75R15, 1598 lb-6 PR	
34	60096	10	Nut, .500-20 wheel lug	
35	26441	8	Nut, U-bolt - 1/2-20	
36	11278	2	Tie-plate, axle - 3500 lb	
37	60674	10	Stud, wheel - .500-20	
38	12307	2	Bearing seal, DL350	
39	30248	1	Cap, actuator, sealed	
A	19379B	1	Weldment, hitch 4 pos	Option: adjustable hitch, elec
B	24304	1	Actuator, hyd surge - 2" ball, 6000 lb	Option: non-adjustable
C	11032	1	Weldment, lun. ring - 3.0 ID/3.0 tongue	Option: non-adjustable
D	12235B	1	Weldment, spare tire holder	Option
E	19417	1	Breakaway kit	Option
F	19518	1	Coupler, 2.00" ball	Option: adjustable
G	19519	1	Coupler, 2.31" ball	Option: adjustable
H	19335B	1	Hitch, pintle eye - 3.00 ID	Option: adjustable
J	60239	2	Screw, .625-11x5.000 hex hd	Option: adjustable
K	60180	4	Washer, .625 flat	Option: adjustable
L	60240	2	Nut, .625-11 nylock	Option: adjustable
M	40529	1	Actuator, hyd surge brake - 7500 lb	Option: adjustable
N	24824B	1	Weldment, flip tongue	Option: for adj. actuator/hitch
O	12311	2	Brake drum - 10" 5 on 4.5"	Option: 3500 lb axle
P	40765	2	10" surge free-backing brake assy, RH	Option: 3500 lb axle
	40764	2	10" surge free-backing brake assy, LH	Option: 3500 lb axle
	26443	2	10" electric brake assembly kit, RH	Option: 3500 lb axle
	26442	2	10" electric brake assembly kit, LH	Option: 3500 lb axle
Q	19421	1	Axle, hydraulic	Option: 3500 lb
	19422	1	Axle, electric	Option: 3500 lb

TRAILER ASSEMBLY - TANDEM AXLE



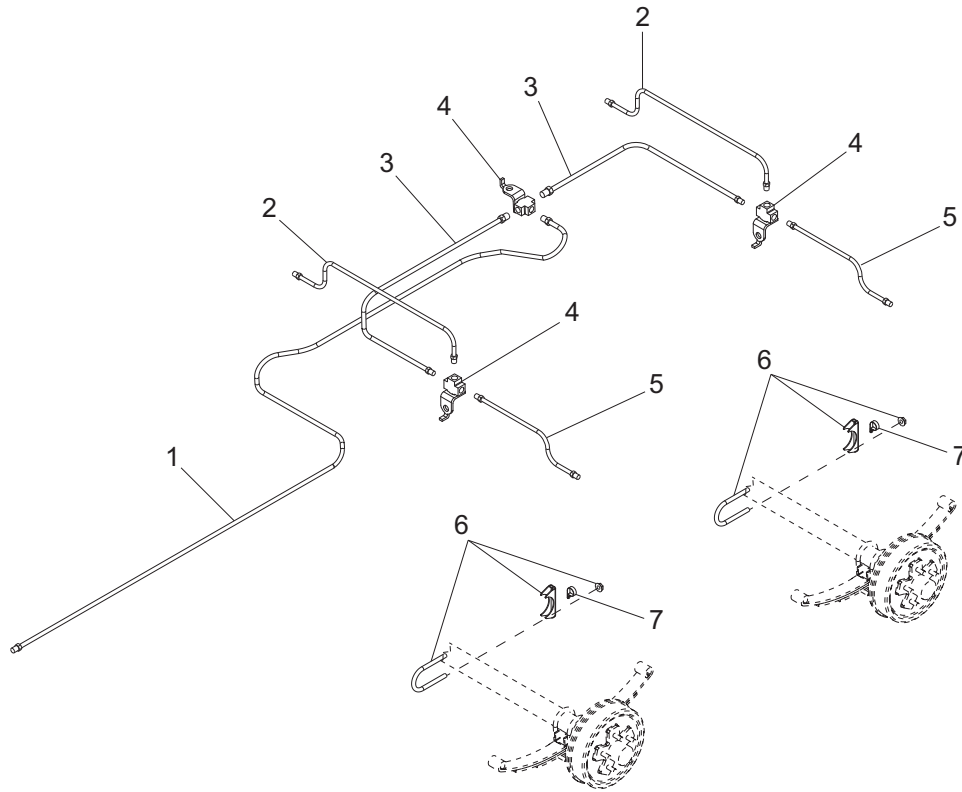
ITEM	PART NO.	QTY	DESCRIPTION	NOTES
1	22976B	2	Weldment, fender tandem	
2	60140	10	Nut, .375-16 hex hd	
3	60386	20	Washer, flat .375	
4	60179	10	Screw, .375-16x.750 std hex	
5	24789B	1	Weldment, trailer	
6	60503	14	Screw, shackle - .562-18x3.0 std hex	
7	60504	14	Nut, lock .562-18	
8	19637	8	Plate, shackle bracket	
9	40545	2	Equalizer, tandem axle	
10	60383	6	Screw, .750-10x1.500 std hex	
11	60247	12	Washer, .750 flat	
12	60248	6	Washer, .750 split lock	
13	15293	6	Nut, .750-10 hex	
14	60307	5	Nut, .500-13 nylock	
15	60416	4	Washer, flat .500	
16	23205	1	Harness, trailer	
17	16143	5	Clamp, tubing - .500	
18	23367	2	Chain, safety - 7800 lb rated	
19	60659	7	Screw, .50-13-5.0 std hex	
20	40529	1	Actuator, hyd surge brake	Adjustable
21	22340	4	Bushing, 1.00 ODx.75 ID	
22	23256	1	Pin, jack - 2000 lb, tube-mtd	
23	13051	1	Jack assy, top wind - 2000 lb tube-mtd	
24	24691B	1	Brace, tongue shipping	
25	24824B	1	Weldment, flip tongue	For adjustable actuator
26	11254	4	Plug, grease cap - for zerk	
27	11253	4	Cap, grease	
28	40956	4	Outer bearing	
29	12311	4	Brake drum - 10" 5 on 4.5"	
30	40765	4	10" Surge brake assy, RH	
	40764	4	10" Surge brake assy, LH	
	26443	4	10" Electric brake assy, RH	Option
	26442	4	10" Electric brake assy, LH	Option
31	40954	4	Inner bearing, axle	
32	12307	4	Bearing seal, DL350	
33	60674	20	Stud, wheel - .500-20	
34	11277	8	U-bolt, axle - 3500 lb	
35	11280	4	Leaf spring 3500 lb	
36	19421	2	Axle, 3500 lb hydraulic	
	19422	2	Axle, 3500 lb electric	
37	15540	4	Wheel, ST205/75R15, 1598 lb	
38	60096	20	Nut, .500-20 wheel lug	
39	26441	16	Nut, U-bolt 1/2-20	
40	11278	4	Tie plate, 3500 lb	
41	19335B	1	Coupler, lunette ring - 3" ID	For adjustable actuator
42	60239	2	Screw, .625-11x5.0 std hex	
43	60180	4	Washer, flat .625	
44	60240	2	Nut, .625-11 nylock	
45	30248	1	Cap, actuator, sealed	
A	24812B	1	Weldment, flip tongue	Option: non-adj actuator
B	19379B	1	Weldment, hitch elec, 4 pos	Option: adjustable actuaor
C	24304	1	Actuator, hyd surge brake	Option: 2" ball
D	19417	1	Breakaway kit	Option
E	12235B	1	Weldment, spare tire holder	Option
F	19519	1	Coupler, 2.31" ball	Option: adjustable actuator
G	19518	1	Coupler, 2.00" ball	Option: adjustable actuator

BRAKE LINES - SINGLE AXLE



ITEM	PART	QTY	DESCRIPTION	NOTES
1	24688	1	Hose, brake - .188x136.00 male/male	
2	40495	1	Line, brake - .188x20.00	
3	40494	1	Line, brake - .188x30.00	
4	19252	1	Fitting, .188 - brake line T w/bracket	All female
5	61028	1	Clamp, muffler - 2.50 lt duty	U-bolt & saddle
6	61010	1	Clamp, tubing - .375 heavy duty, .375 bolt	

BRAKE LINES - TANDEM AXLE



ITEM	PART	QTY	DESCRIPTION	NOTES
1	24688	1	Hose, brake - .188x136.00 male/male	
2	40494	2	Line, brake - .188x30.00	
3	40817	2	Hose, brake - .188x33.00 male/male	
4	19252	3	Fitting, .188 - brake line T w/bracket	All female
5	40495	2	Line, brake - .188x20.00	
6	61028	2	Clamp, muffler - 2.50 lt duty	U-bolt & saddle
7	61010	2	Clamp, tubing - .375 heavy duty, .375 bolt	

REV: A
PART NO: 29717
03.09.12